

Incandescent Lighting

Create a brighter standard

Bad lighting can make people and objects look washed out. **Philips Natural Light Bulbs** help you see things the way they should be. Natural Light's distinctive blue coating reduces dull light effects to provide light that is more vibrant and natural. Natural Light brings out the true colors of people and the décor.

Philips DuraMax® Long Life Light Bulbs reduce the hassle of replacing light bulbs every few months, since all DuraMax products last longer than standard incandescent light bulbs. A wide assortment of shapes, sizes and wattages ensures that there is a DuraMax product to meet most basic lighting needs.

Philips Family of Specialty Incandescents provide the perfect light for dramatic accents and display lighting as well as general lighting in a variety of applications. From tubular shapes and appliance bulbs, to colored lamps made specifically for holiday, party or special effects lighting, this family of lamps has everything needed for professional and consumer applications.





Incandescent Lighting

DuraMax® Family	23
Natural Light Family	26
Incandescent Lamps (By Wattage)	27
Philinea Lamps	39
Lamps Listed by Lumens	39
Special Lighting	39
Street Lighting Lamps (Multiple and Series)	39
Decorative Lamps (Blister-Carded)	40
Decorative Lamps (Boxed and Others)	42
Filament Designations	43
Base Types and Bulb Shapes	43
Footnotes	44

Watts	Bulb	Base	Product Number	Symbols, Footnotes	Ordering Code	Volts	Pkg. Qty.*	Description	Class, Filament	LCL (In.)	MOL (In.)	Rated Avg. Life, Hrs (93)	Approx. MBCP*	Lumens		
DuraMax® Long Life Soft White																
15	A-15	Med.	16860-9	▲	15A/WL 12/2	120	24	Soft White Long Life	B, C-9		3 ½	3000		115		
25	A-19	Med.	16868-2	▲	25A/WL 12/2	120	24	Soft White Long Life	C, CC-6		4 ¾	3000		235		
30	A-21	3 Ct.	16947-4	▲ (8)	30/100A/WL 12/1	120	12	Soft White Long Life 3-Way	C, 2CC-8		5 ¾	1750		285		
70		920														
100		1205														
40	A-19	Med.	16869-0	▲	40A/WL 12/4	120	48	Soft White Long Life	C, CC-6		4 ¾	1500		475		
			16737-9	▲	40A/WL 24/4	120	96	Soft White Long Life	C, CC-6		4 ¾	1500		475		
50	A-21	3 Ct.	16948-2	▲ (8)	50/150A/WL 12/1	120	12	Soft White Long Life 3-Way	C, 2CC-8		5 ¾	1750		575		
100	Med.	1440														
150		2015														
50	A-21	3 Ct.	16949-0	▲ (8)	50/250A/WL 12/1	120	12	Soft White Long Life 3-Way	C, 2CC-8		5 ¾	1750		575		
200	Med.	3120														
250		3695														
60	A-19	Med.	16874-0	▲	60A/WL 12/4	120	48	Soft White Long Life	C, CC-6		4 ¾	1500		830		
			16738-7	▲	60A/WL 24/4	120	96	Soft White Long Life	C, CC-6		4 ¾	1500		830		
75	A-19	Med.	16879-9	▲	75A/WL 12/4	120	48	Soft White Long Life	C, CC-6		4 ¾	1500		1040		
			16739-5	▲	75A/WL 24/4	120	96	Soft White Long Life	C, CC-6		4 ¾	1500		1040		
100	A-19	Med.	16862-5	▲	100A/WL 12/4	120	48	Soft White Long Life	C, CC-8		4 ¾	1500		1550		
			16740-3	▲	100A/WL 24/4	120	96	Soft White Long Life	C, CC-8		4 ¾	1500		1550		
150	A-21	Med.	16866-6	▲	150A/WL 12/1	120	12	Soft White Long Life	C, CC-8		5 ¾	1500		2310		
200	A-21	Med.	16867-4	▲	200A/WL 6/1	120	6	Soft White Long Life	C, CC-8		5 ¾	1500		3300		
DuraMax® Long Life Globes																
25	G-25	Med.	16748-6	▲	25G25/W/LL 12/1	120	12	White Long Life Globe	C, CC-6		4 ¾	2000		210		
			16887-2	▲	25G25/CL/LL 12/1	120	12	Clear Long Life Globe	C, CC-6		4 ¾	2000		235		
			16901-1	▲	25G25/CL/LL 4/3	120	12	Clear Long Life Globe	C, CC-6		4 ¾	2000		235		
			16902-9	▲	25G25/W/LL 4/3	120	12	White Long Life Globe	C, CC-6		4 ¾	2000		210		
40	G-25	Med.	16903-7	▲	40G25/CL/LL 4/3	120	12	Clear Long Life Globe	C, CC-6		4 ¾	2000		460		
			16904-5	▲	40G25/W/LL 4/3	120	12	White Long Life Globe	C, CC-6		4 ¾	2000		415		
			16746-0	▲	40G25/W/LL 12/1	120	12	White Long Life Globe	C, CC-6		4 ¾	2000		415		
			16747-8	▲	40G25/CL/LL 12/1	120	12	Clear Long Life Globe	C, CC-6		4 ¾	2000		460		
			16702-3	▲	40G25/CT 6/1	120	6	Clear Long Life Chrome Top	C, C-9		4 ¾	2000		200		
			G-40	Med.	16857-5	▲	40G40/CL/LL 6/1	120	6	Clear Long Life Globe	C, C-9		6 ½	3000		372
					16858-3	▲	40G40/W/LL 6/1	120	6	White Long Life Globe	C, C-9		6 ½	3000		335
60	G-25	Med.	16749-4	▲	60G25/W/LL 12/1	120	12	White Long Life Globe	C, CC-6		4 ¾	2000		700		
			16896-2	▲	60G25/CL/LL 12/1	120	12	Clear Long Life Globe	C, CC-6		4 ¾	2000		775		
			16899-6	▲	60G25/CL/LL 4/3	120	12	Clear Long Life Globe	C, CC-6		4 ¾	2000		775		
			16900-3	▲	60G25/W/LL 4/3	120	12	White Long Life Globe	C, CC-6		4 ¾	2000		700		
			G-30	Med.	16849-2	▲	60G30/W/LL 6/1	120	6	White Long Life Globe	C, C-9		5 ½	3000		580
			G-40	Med.	16851-8	▲	60G40/W/LL 6/1	120	6	White Long Life Globe	C, C-9		6 ½	3000		595
100	G-40	Med.	16852-6	▲	60G40/CL/LL 6/1	120	6	Clear Long Life Globe	C, C-9		6 ½	3000		665		
			13423-9	▲	100G25/W/LL 12/1	120	12	White Long Life Globe	C, CC-6		4 ¾	2000		1180		
			16850-0	▲	100G30/W/LL 6/1	120	6	White Long Life Globe	C, C-9		5 ½	3000		945		
			16853-4	▲	100G40/W/LL 6/1	120	6	White Long Life Globe	C, C-9		6 ½	3000		985		
			16859-1	▲	100G40/CL/LL 6/1	120	6	Clear Long Life Globe	C, C-9		6 ½	3000		1100		
150	G-40	Med.	16854-2	▲	150G40/W/L 6/1	120	6	White Long Life Globe	C, C-9		6 ½	3000		1770		

For the most current product information, go to the e-catalog on www.philips.com
Incandescent symbols and footnotes located on page 44

Watts	Bulb	Base	Product Number	Symbols, Footnotes	Ordering Code	Volts	Pkg. Qty.*	Description	Class, Filament	LCL (In.)	MOL (In.)	Rated Avg. Life, Hrs (93)	Approx. MBCP*	Lumens
DuraMax® Long Life Reflectors														
30	R-20	Med.	16753-6	▲ (87)	30R20/LL 12/I	120	12	Frost Long Life Reflector	C, CC-6		3 1/8	2500	350	205
45	BR-30	Med.	16751-0	▲ (87)	45BR30/FL55/LL 12/I	120	12	Long Life Reflector Flood	C, CC-6		5 3/8	2500		340
50	BR-19	Med.	16750-2	▲ (87)	50BR19/25/SP/LL 12/I	120	12	Long Life Spotline Reflector	C, CC-11		4 1/8	2500	700	385
	R-20	Med.	16755-1	▲ (87)	50R20/LL 12/I	120	12	Frost Long Life Reflector	C, CC-6		3 1/8	2500	600	385
65	BR-30	Med.	16768-4	▲ (87)	65BR30/FL55/LL 12/I	120	12	Long Life Reflector Flood	C, CC-6		5 3/8	2500	510	595
			16769-2	▲ (87)	65BR30/SP20/LL 12/I	120	12	Long Life Reflector Spot	C, CC-6		5 3/8	2500	530	610
	BR-40	Med.	16741-1	▲ (87)	65BR/FL60/LL 8/I	120	8	Long Life Reflector Flood	C, CC-6		6 1/2	2500	500	630
75	R-20	Med.	16763-5	▲ (87)	75R20/LL 12/I	120	12	Frost Long Life Reflector	C, CC-6		3 1/8	2500	1250	570
85	BR-30	Med.	16766-8	▲ (87)	85BR30/FL55/LL 6/I	120	6	Long Life Reflector Flood	C, CC-6		5 3/8	2500	700	855
			16767-6	▲ (87)	85BR30/SP20/LL 6/I	120	6	Long Life Reflector Spot	C, CC-6		5 3/8	2500	3100	865
	BR-40	Med.	16785-8	▲ (87)	85BR/FL60/LL 8/I	120	8	Long Life Reflector Flood	C, CC-6		6 1/2	2500	700	900
			16788-2	▲ (87)	85BR/SP20/LL 8/I	120	8	Long Life Reflector Spot	C, CC-6		6 1/2	2500	3100	900
100	R-20	Med.	16701-5	▲ (87)	100R20/LL 12/I	120	12	Frost Long Life Reflector	C, CC-6		3 1/8	2500		935
120	BR-40	Med.	16779-1	▲ (87)	120BR/FL60/LL 8/I	120	8	Long Life Reflector Flood	C, CC-6		6 1/2	2500	1000	1285
			16781-7	▲ (87)	120BR/SP20/LL 8/I	120	8	Long Life Reflector Spot	C, CC-6		6 1/2	2500	4600	1225

DuraMax® Long Life Sparkling Clear

40	A-19	Med.	16797-2	▲	40A/CL/LL 12/2	120	24	Clear Long Life	C, CC-6		4 1/8	1500		505
60	A-19	Med.	16794-0	▲	60A/CL/LL 12/2	120	24	Clear Long Life	C, CC-6		4 1/8	1500		900
75	A-19	Med.	16801-3	▲	75A/CL/LL 12/2	120	24	Clear Long Life	C, CC-6		4 1/8	1500		1080
100	A-19	Med.	16795-6	▲	100A/CL/LL 12/2	120	24	Clear Long Life	C, CC-6		4 1/8	1500		1470
150	A-21	Med.	16799-8	▲	150A/CL/LL 12/I	120	12	Clear Long Life	C, CC-8		5 3/8	1500		2570
200	A-23	Med.	16798-0	▲	200A/CL/LL 6/I	120	6	Clear Long Life	C, CC-8		6 3/8	1500		3665

DuraMax® Long Life Fan Lights

40	A-15	Med.	16934-2	▲	BC40A15/FAN/CL/LL 6/2	120	12	Clear Long Life Fan	C, CC-2R		3 1/2	2000		395
			16935-9	▲	BC40A15/FAN/W/LL 6/2	120	12	White Long Life Fan	C, CC-2R		3 1/2	2000		365
60	A-15	Med.	16945-8	▲	BC60A15/FAN/W/LL 6/2	120	12	White Long Life Fan	C, CC-2R		3 1/2	2000		570
			16946-6	▲	BC60A15/FAN/CL/LL 6/2	120	12	Clear Long Life Fan	C, CC-2R		3 1/2	2000		630

DuraMax® Long Life Decoratives

3	CA-10	Med.	16697-4	▲ (12)	BC3CA10/CL/LL 6/1	120	6	Clear Long Life Flicker Flame	B, CC-2V		3 3/8	2000		
		Cand.	16698-2	▲ (12)	BC3CA10C/CL/LL 6/1	120	6	Clear Long Life Flicker Flame	B, CC-2V		4 1/8	2000		
15	BA-9	Cand.	16811-2	▲ (12)	BC15BA9C/CL/LL 6/2	120	12	Clear Long Life Bent Tip	B, CC-2V C-7A		4 3/8	2000		110
			16696-6	▲ (12)	BC15BA9C/CL/LL 6/4	120	24	Clear Long Life Bent Tip	B, CC-2V C-7A		3 3/8	2000		110
	F-10	Cand.	16830-2	▲ (12)	BC15F10C/CL/LL 6/2	120	12	Clear Long Life Flame	B, C-7A		3 1/8	2000		95
25	BA-9	Cand.	16831-0	▲ (12)	BC15F10C/A/LL 6/2	120	12	Amber Long Life Flame	B, C-7A		3 1/8	2000		85
			16719-7	▲ (12)	BC25BA9C/CL/LL 6/4	120	24	Clear Long Life Bent Tip	C, CC-2V C-7A		4 3/8	2000		150
			16806-2	▲ (12)	BC25BA9C/CL/LL 6/2	120	12	Clear Long Life Bent Tip	C, CC-2V C-7A		4 3/8	2000		150
			16810-4	▲ (12)	BC25BA9C/F/LL 6/2	120	12	Frost Long Life Bent Tip	C, CC-2V C-7A		4 3/8	2000		145
	BA-9 1/2	Med.	16819-5	▲ (12)	BC25BA9-1/2/CL/LL 6/2	120	12	Clear Long Life Bent Tip	C, CC-2V C-7A		4 3/8	2000		150
	B-10 1/2	Cand.	16824-5	▲ (12)	BC25B10-1/2C/CL/LL 6/2	120	12	Clear Long Life Blunt Tip	C, C-7A		4 1/8	2000		150
	B-13	Med.	16827-8	▲ (12)	BC25B13/CL/LL 6/2	120	12	Clear Long Life Blunt Tip	C, C-7A		4 1/8	2000		150
CA-8	Cand.	13568-1	▲ (12)	BC25CA8C/CL/LL 6/2	120	12	Clear Petite Long Life Bent Tip	C, CC-2V		3 1/2	2000		220	
		F-10	Cand.	16832-8	▲ (12)	BC25F10C/CL/LL 6/2	120	12	Clear Long Life Flame	B, C-7A		3 1/8	2000	

For the most current product information, go to the e-catalog on www.philips.com
Incandescent symbols and footnotes located on page 44

Watts	Bulb	Base	Product Number	Symbols, Footnotes	Ordering Code	Volts	Pkg. Qty.	Description	Class, Filament	LCL (In.)	MOL (In.)	Rated Avg. Life, Hrs (93)	Approx. MBCP*	Lumens
25	F-15	Med.	16833-6	▲ (12)	BC25F15/CL/LL 6/2	120	12	Clear Long Life Flame	B, C-9		4 ½	2000		150
			16839-3	▲ (12)	BC25F15/IR/LL 6/2	120	12	Incandescent Long Life Flame	C, C-9		4 ½	2000		150
			16840-1	▲ (12)	BC25F15/W/LL 6/2	120	12	White Long Life Flame	C, C-9		4 ½	2000		120
	G-16 ½	Cand.	16841-9	▲ (12)	BC25F15/A/LL 6/2	120	12	Amber Long Life Flame	B, C-9		4 ½	2000		130
			16845-0	▲ (12)	BC25G16-1/2C/CL/LL 6/2	120	12	Clear Long Life Globe	B, CC-2V C-7A		3	2000		200
		Med.	16847-6	▲ (12)	BC25G16-1/2C/W/LL 6/2	120	12	White Long Life Globe	B, CC-2V C-7A		3	2000		165
			13535-0	▲ (12)	BC25G16-1/2/CL/LL 6/2	120	12	Clear Long Life Globe	C, CC-2V		2 ¾	2000		180
13534-3	▲ (12)	BC25G16-1/2/W/LL 6/2	120	12	White Long Life Globe	C, CC-2V		2 ¾	2000		120			
40	BA-9	Cand.	16720-5	▲ (12)	BC40BA9C/CL/LL 6/4	120	24	Clear Long Life Bent Tip	C, CC-2V C-7A		4 ⅙	2000		300
			16807-0	▲ (12)	BC40BA9C/CL/LL 6/2	120	12	Clear Long Life Bent Tip	C, CC-2V C-7A		4 ⅙	2000		300
			16809-6	▲ (12)	BC40BA9C/F/LL 6/2	120	12	Frost Long Life Bent Tip	C, CC-2V C-7A		4 ⅙	2000		295
	BA-9 ½	Med.	16760-1	▲ (12)	BC40BA9-1/2/CL/LL 6/4	120	24	Clear Long Life Bent Tip	C, CC-2V C-7A		4 ⅙	2000		300
			16820-3	▲ (12)	BC40BA9-1/2/CL/LL 6/2	120	12	Clear Long Life Bent Tip	C, CC-2V C-7A		4 ⅙	2000		300
			16821-1	▲ (12)	BC40BA9-1/2/F/LL 6/2	120	12	Frost Long Life Bent Tip	C, CC-2V C-7A		4 ⅙	2000		295
	B-10 ½	Cand.	16825-2	▲ (12)	BC40B10-1/2C/CL/LL 6/2	120	12	Clear Long Life Blunt Tip	C, C-7A		4 ⅙	2000		300
	B-13	Med.	16828-6	▲ (12)	BC40B13/CL/LL 6/2	120	12	Clear Long Life Blunt Tip	C, C-7A		4 ⅙	2000		300
	F-15	Med.	16835-1	▲ (12)	BC40F15/CL/LL 6/2	120	12	Clear Long Life Flame	C, C-9		4 ½	2000		385
			16837-7	▲ (12)	BC40F15/IR/LL 6/2	120	12	Incandescent Long Life Flame	C, C-9		4 ½	2000		370
			16838-5	▲ (12)	BC40F15/W/LL 6/2	120	12	White Long Life Flame	C, C-9		4 ½	2000		300
	G-16 ½	Cand.	16846-8	▲ (12)	BC40G16-1/2C/CL/LL 6/2	120	12	Clear Long Life Globe	C, CC-2V C-7A		3	2000		300
			16848-4	▲ (12)	BC40G16-1/2C/W/LL 6/2	120	12	White Long Life Globe	C, CC-2V C-7A		3	2000		245
		Med.	13537-6	▲ (12)	BC40G16-1/2/CL/LL 6/2	120	12	Clear Long Life Globe	C, CC-2V		2 ¾	2000		300
			13536-8	▲ (12)	BC40G16-1/2/W/LL 6/2	120	12	White Long Life Globe	C, CC-2V		2 ¾	2000		270
			16808-8	▲ (12)	BC60BA9C/CL/LL 6/2	120	12	Clear Long Life Bent Tip	C, CC-2V C-7A		4 ⅙	2000		550
	60	BA-9	Cand.	16721-3	▲ (12)	BC60BA9C/CL/LL 6/4	120	24	Clear Long Life Bent Tip	C, CC-2V C-7A		4 ⅙	2000	
16805-4				▲ (12)	BC60BA9C/F/LL 6/2	120	12	Frost Long Life Bent Tip	C, CC-2V C-7A		4 ⅙	2000		545
16822-9				▲ (12)	BC60BA9-1/2/CL/LL 6/2	120	12	Clear Long Life Bent Tip	C, CC-2V C-7A		4 ⅙	2000		550
BA-9 ½		Med.	16823-7	▲ (12)	BC60BA9-1/2/F/LL 6/2	120	12	Frost Long Life Bent Tip	C, CC-2V C-7A		4 ⅙	2000		545
			16826-0	▲ (12)	BC60B10-1/2C/CL/LL 6/2	120	12	Clear Long Life Blunt Tip	C, C-7A		4 ⅙	2000		550
B-10 ½		Cand.	16829-4	▲ (12)	BC60B13/CL/LL 6/2	120	12	Clear Long Life Blunt Tip	C, C-7A		4 ⅙	2000		550
B-13		Med.	16842-7	▲ (12)	BC60F15/CL/LL 6/2	120	12	Clear Long Life Flame	C, C-9		4 ½	2000		630
G-16 ½		Cand.	16699-0	▲ (12)	BC60G16-1/2C/CL/LL 6/2	120	12	Clear Long Life Globe	C, CC-2V C-7A		3	2000		540
			16700-7	▲ (12)	BC60G16-1/2C/W/LL 6/2	120	12	White Long Life Globe	C, CC-2V C-7A		3	2000		450
		Med.	13538-4	▲ (12)	BC60G16-1/2/CL/LL 6/2	120	12	Clear Long Life Globe	C, CC-2V		2 ¾	2000		540
			13530-1	▲ (12)	BC60G16-1/2/W/LL 6/2	120	12	White Long Life Globe	C, CC-2V		2 ¾	2000		420
	100		F-20	Med.	16844-3	▲ (12)	100F20/POSTLT/CL/LL 6/1	120	6	Clear Long Life PostLight	C, C-9		5 ⅙	4000

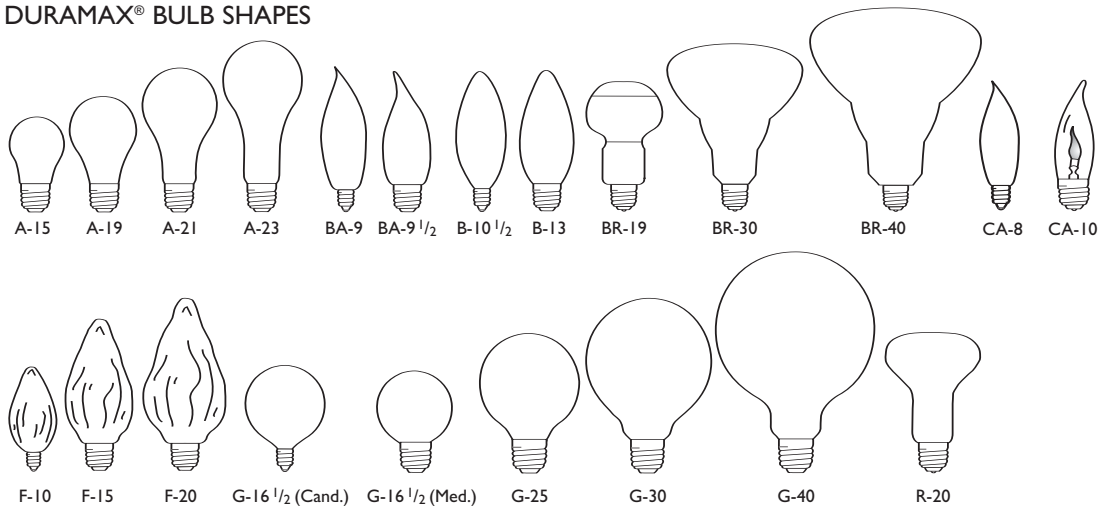
For the most current product information, go to the e-catalog on www.philips.com
Incandescent symbols and footnotes located on page 44

Natural Light

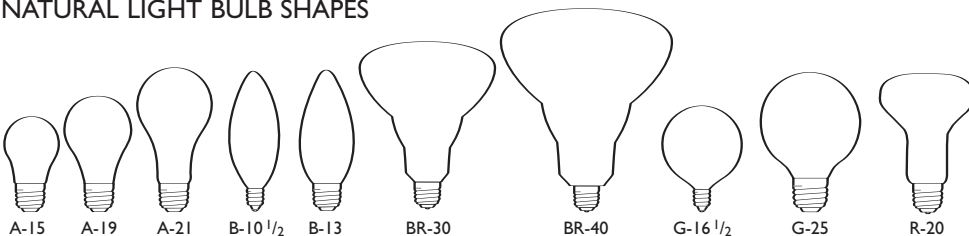
Watts	Bulb	Base	Product Number	Symbols, Footnotes	Ordering Code	Volts	Pkg. Qty.*	Description	Class, Filament	MOL (In.)	Rated Avg. Life, Hrs (93)	Approx. MBCP*	Lumens
Natural Light Standard													
NEW!	40	A-19	Med.	13558-2	▲	40A/NTL 12/4	120	48	Natural Light Standard	C,CC-6	4 7/8	1000	400
	60	A-19	Med.	13559-0	▲	60A/NTL 12/4	120	48	Natural Light Standard	C,CC-6	4 7/8	1000	680
	75	A-19	Med.	13560-8	▲	75A/NTL 12/4	120	48	Natural Light Standard	C,CC-6	4 7/8	750	950
	100	A-19	Med.	13561-6	▲	100A/NTL 12/4	120	48	Natural Light Standard	C,CC-6	4 7/8	750	1350
Natural Light 3-Way													
NEW!	50	A-21	3 Ct.	13564-0	▲ (8)	50/150A/NTL 12/1	120	12	Natural Light 3-Way	C,2CC-8	5 3/8	1200	490
	100		Med.										1250
	150												1740
Natural Light Globe													
NEW!	40	G-25	Med.	13563-3	▲	40G25/NTL 6/1	120	6	Natural Light Globe	C,CC-6	4 7/8	1500	320
	60	G-25	Med.	13562-4	▲	60G25/NTL 6/1	120	6	Natural Light Globe	C,CC-6	4 7/8	1500	560
Natural Light Fan													
NEW!	40	A-15	Med.	13565-7	▲	BC40A15/NTL 6/2	120	6	Natural Light Fan	C,CC-2R	3 1/2	1500	340
Natural Light Reflector													
NEW!	50	R-20	Med.	13797-5	▲ (87)	50R20/FL/NTL 12/1	120	12	Natural Light Reflector	C,CC-6	3 1/8	2000	265
	65	BR-30	Med.	13785-1	▲ (87)	65BR30/FL/NTL 12/1	120	12	Natural Light Reflector	C,CC-6	5 3/8	2000	500
	85	BR-40	Med.	14579-7	▲ (87)	85BR/FL/NTL 8/1	120	8	Natural Light Reflector	C,CC-6	6 1/2	2000	640
Natural Light Decorative													
NEW!	40	G16 1/2	Cand.	14129-1	▲ (12)	BC40G16-1/2C/NTL 6/2	120	12	Natural Light Decorative	C, C-7A	3	2000	270
		B10 1/2	Cand.	14125-9	▲ (12)	BC40B10-1/2C/NTL 6/2	120	12	Natural Light Decorative	C, C-7A	4 1/8	2000	270
		B13	Med.	14127-5	▲ (12)	BC40B13/NTL 6/2	120	12	Natural Light Decorative	C, C-7A	4 1/8	2000	270
	60	G16 1/2	Cand.	14130-9	▲ (12)	BC60G16-1/2C/NTL 6/2	120	12	Natural Light Decorative	C, C-7A	3	2000	510
		B10 1/2	Cand.	14126-7	▲ (12)	BC60B10-1/2C/NTL 6/2	120	12	Natural Light Decorative	C, C-7A	4 1/8	2000	510
		B13	Med.	14128-3	▲ (12)	BC60B13/NTL 6/2	120	12	Natural Light Decorative	C, C-7A	4 1/8	2000	510

For the most current product information, go to the e-catalog on www.philips.com
Incandescent symbols and footnotes located on page 44

DURAMAX® BULB SHAPES



NATURAL LIGHT BULB SHAPES



Watts	Bulb	Base	Product Number	Symbols, Footnotes	Ordering Code	Volts	Pkg. Qty.	Description	Class, Filament	LCL (In.)	MOL (In.)	Rated Avg. Life, Hrs (93)	Approx. MBCP *	Lumens			
3	S-6	Cand.	37374-6	▲	3S6/5	120-130	48	Clear Indicator	B, C-7A		1 7/8	3000		12			
4	C-7	Cand.	25706-3	▲	BC4C7 12/2	120	24	Clear Night Light	B, C-7A		2 1/8	3000		16			
			24741-1	▲	BC4C7/4 12/4	120	48	Clear Night Light	B, C-7A		2 1/8	3000		16			
			25708-9	▲	BC4C7/W 12/2	120	24	White Night Light	B, C-7A		2 1/8	3000		14			
			23443-5	▲	6S6	12	48	Clear Indicator	B, C-2V		1 7/8	1500		48			
6	S-6	Cand.	23449-2	▲	6S6	24	48	Clear Indicator	B, C-2V		1 7/8	1500		53			
			23451-8	▲	6S6	30	48	Clear Train	B, C-2V		1 7/8	1500		52			
			23458-3		6S6/BR	32	48	Clear Train	B, C-2V		1 7/8	1500		51			
			24835-1		6S6	120-130	48	Clear Indicator	B, C-7A		1 7/8	1500		39			
			23461-7		6S6	135	48	Clear Indicator	B, C-7A		1 7/8	1500		38			
			23462-5		6S6	145	48	Clear Indicator	B, C-7A		1 7/8	1500		37			
			23476-5		6S6	155	48	Clear Indicator	B, C-7A		1 7/8	1500		37			
			23477-3		6S6/3	130	48	Clear Vibration	B, C-7A		1 7/8	1500		18			
			23479-9		6S6/7	120	48	Clear Indicator	B, C-7A		1 3/8	1500		39			
			Inter. D.C. Bay	37376-1		6S6DC	120-130	48	Clear Indicator	B, C-7A	1 1/8	1 3/8	1500		39		
				23483-1		6S6DC	145	48	Clear Indicator	B, C-7A	1 1/8	1 3/8	1500		37		
			T-4 1/2	Cand.	37377-9	▲	6T4 1/2 I	120-130	24	Clear Indicator	B, C-7A		1 7/8	1500		34	
			7	C-7	Cand.	37378-7	▲	7C7	120-130	24	Clear Indicator	B, C-7A		2 1/8	3000		45
						23643-0	▲	7C7/W	120	24	White Night Light	B, C-7A		2 1/8	3000		35
						25714-7	▲	BC7C7/W 12/2	120	24	White Night Light	B, C-7A		2 1/8	3000		35
						23635-6	▲	7C7/O 24PK	120	24	Orange Indicator	B, C-7A		2 1/8	3000		16
23636-4	▲	7C7/R 24PK				120	24	Red Indicator	B, C-7A		2 1/8	3000		13			
7 1/2	S-11	Med.	24811-2	▲	7 1/2 S	120-130	24	Clear	B, C-7A		2 1/4	1400		45			
			37380-3	▲	7 1/2 S/W	120-130	24	White Night Light	B, C-7A		2 1/4	1400		35			
			23611-7	▲	7 1/2 S/O 24PK	120	24	Orange	B, C-7A		2 1/4	1400		18			
10	C-7	Cand. D.C. Bay	24812-0	(3)	10C7	120	24	Clear Indicator	B, C-7A		2 1/8			50			
			23639-8	▲ (3)	10C7DC	120	24	Clear Indicator	B, C-7A		2 1/8			50			
	S-6	Cand.	23485-6	▲	10S6/10	230	48	Clear Indicator	B, C-7A		1 7/8	1500		65			
			23488-0	▲	10S6/10	250	48	Clear Indicator	B, C-7A		1 7/8	1500		65			
	S-11	Cand. Inter.	23598-6	▲	10S11/79	120	24	Clear Indicator	B, C-7A	1 1/8	2 1/4	1500		70			
			23606-7	▲	10S11N/IF	120	24	Frost Appliance	B, C-7A		2 1/4	1500		70			
			37381-1	▲	10S11N	120-130	24	Clear	B, C-7A	1 1/8	2 1/4	1500		70			
	S-14	Med.	21308-2	X	10S14/IF	130	120	Frost Sign	B, C-9		3 1/2	1500					
			13828 9		10S14/IF	130	120	Frost Sign	B, C-9		3 1/2	1500		72			
13829 7				10S14	120-130	120	Clear Sign	B, C-9		3 1/2	1500		72				
11	S-14	Med.	38025-3	X	11S14/Y	130	120	Yellow Sign	B, C-9		3 1/2	3000					
			13831 3		11S14/Y 24/1	130	24	Yellow Sign	B, C-9		3 1/2	3000					
			13833 9		11S14/TB 24/1	130	24	Transparent Blue Sign	B, C-9		3 1/2	3000					
			39006-2	X	11S14/TR	130	120	Transparent Red Sign	B, C-9		3 1/2	3000					
			13832 1		11S14/TR 24/1	130	24	Transparent Red Sign	B, C-9		3 1/2	3000					
			39095-5	X	11S14/TY	130	120	Transparent Yellow Sign	B, C-9		3 1/2	3000					
			13834 7		11S14/TY 24/1	130	24	Transparent Yellow Sign	B, C-9		3 1/2	3000					
			373837		11S14	130	24	Clear Sign	B, C-9		3 1/2	3000		77			
			15	A-15	Med.	37384-5	▲	15A15	120-130	120	Frost	B, C-9		3 1/2	2500		110
						37385-2	▲	15A15/CL	120-130	120	Clear	B, C-9	2 1/8	3 1/2	2500		110
21376-9	▲	15A/R				120	60	Red	B, C-9		3 1/2	2500					
16860-9	▲	15A/WL 12/2				120	24	Soft White Long Life	B, C-9		3 1/2	3000		115			
Med.	25849-1	□		15A15/35	130	60	Frost Industrial Service	B, C-9		3 1/2	3500		113				
S-11	D.C. Bay	23599-4		(12)	15S11/3DC	75	24	Clear Train Marker Control	B, C-7A	1 1/8	2 1/8	1000		140			
		Med.		23614-1	▲	15S11/102	120	24	Clear Refrigerator	B, C-7A	1 1/8	2 1/4	400		130		
T-6	Cand.	23582-0		▲	15T6	120	24	Clear Switchboard	B, C-7A		3 1/8	2000		110			
		24815-3		▲ (63)	15T6	140-150	24	Clear Switchboard	B, C-7A		3 1/8	2000		100			
D.C. Bay	23590-3			15T6DC	120	24	Clear Switchboard	B, C-7A		3 1/8	2000		110				
T-7	D.C. Bay	22307-3		(4)	15T7DC	120	24	Clear Appliance	B, C-7A		2 1/4			104			
		22308-1		▲(4)	15T7C	120	24	Clear Appliance	B, C-7A		2 1/4			104			
		24816-1		▲(4)	15T7N	120	24	Clear Appliance	B, C-7A		2 1/4			104			
		29904-0		▲(4)	BC15T7N 12/1	120	12	Clear Appliance	B, C-7A		2 1/4			104			
T-8	Cand. Inter.	23591-1		▲	15T8C	120	24	Clear Appliance	B, C-7A		2 1/8	1000		110			
		23594-5		▲	15T8N	120	24	Clear Appliance	B, C-7A		2 1/8	1000		110			
T-10	Med.	39041 9		▲	BC15T10 6/1	120	6	Frost Showcase	B, C-8		5 1/8	1000		120			

For the most current product information, go to the e-catalog on www.philips.com
 Incandescent symbols and footnotes located on page 44

Incandescent

Watts	Bulb	Base	Product Number	Symbols, Footnotes	Ordering Code	Volts	Pkg. Qty.*	Description	Class, Filament	LCL (In.)	MOL (In.)	Rated Avg. Life, Hrs (93)	Approx. MBCP*	Lumens			
17	R-20	Med.	23263-7		17R20	6.3	60	Frost Reflector Lt.	C, C-6		3 1/8	2000					
18	S-11	S.C. Bay	29137-7		18S11/ISC/6	10	120	Railroad Signal	C, CC-6	1 1/4	2 3/8	6000					
20	S-11	S.C. Bay	29139-3		20S11/ISC/6	10	120	Railroad Signal	C, CC-6	1 1/4	2 3/8	6000					
			24853-4	(3)	20T6-1/2IF	120	24	Frost Exit Sign	B, C-8		5 1/2			150			
	T-6 1/2	Inter. D.C. Bay	24839-3	(3)	20T6-1/2DC/IF	120	24	Frost Exit Sign	B, C-8		5 1/2			150			
			24838-5	(3)	20T6-1/2DC	120	24	Clear Exit Sign	B, C-8		5 1/2			160			
24	T-6 1/2	Inter.	24848-4	□	24T6-1/2IF	120	24	Frost Exit Sign 1 Yr. Life	B, C-8		5 1/2	8760		200			
25	A-15	Med.	23165-4	▲	25A15/I	120	120	Frost Refrigerator	B, C-9		3 1/2	1000		205			
			16710-6	▲	BC25A15/IF 12/I	120	12	Frost Appliance	B, C-9		3 1/2	1000		210			
	A-19	Med.	16868-2	▲	25A/WL 12/2	120	24	Soft White Long Life	C, CC-6		4 3/8	3000		235			
			38942-9	▲ X	25A/TG 6/I	120	6	Transparent Green	B, C-9		3 15/16	3000					
			14421-2	▲	25A/TG 6/I	120	6	Transparent Green	B, C-9		3 15/16	3000					
			38943-7	▲ X	25A/TR 6/I	120	6	Transparent Red	B, C-9		3 15/16	3000					
			14422-0	▲	25A/TR 6/I	120	6	Transparent Red	B, C-9		3 15/16	3000					
			38945-2	▲ X	25A/TY 6/I	120	6	Transparent Yellow	B, C-9		3 15/16	3000					
			14423-8	▲	25A/TY 6/I	120	6	Transparent Yellow	B, C-9		3 15/16	3000					
			38946-0	▲ X	25A/TB 6/I	120	6	Transparent Blue	B, C-9		3 15/16	3000					
			14420-4	▲	25A/TB 6/I	120	6	Transparent Blue	B, C-9		3 15/16	3000					
			14152 3	▲	25A	24	120	Frost	C, C-6		4 1/4	1000		320			
			14153 1	▲	25A	34	120	Frost Train	C, C-6		4 1/4	1000		270			
			25564-6	▲	25A	120	24/2	Frost	C, CC-6		4 7/8	2500		232			
			30031-9	▲	25A/TF	120	120	Frost Silicone Coated	B, C-9		3 15/16	2500					
			37988-3	▲ X	25A/B	120	60	Blue	B, C-9		3 15/16	2500					
			14159 8	▲	25A/B	120	60	Blue	B, C-9		3 15/16	2500					
			37994-1	▲ X	25A/G	120	60	Green	B, C-9		3 15/16	2500					
			14161 4	▲	25A/G	120	60	Green	B, C-9		3 15/16	2500					
			37989-1	▲ X	25A/R	120	60	Red	B, C-9		3 15/16	2500					
			14160 6	▲	25A/R	120	60	Red	B, C-9		3 15/16	2500					
			37978-4	▲ X	25A/Y	120	60	Yellow	B, C-9		3 15/16	2500					
			14158 0	▲	25A/Y	120	60	Yellow	B, C-9		3 15/16	2500					
			33365-8	▲	25A19/RS	75	120	Frost Train Rough Ser.	R, C-9		3 15/16	1000		240			
			37386-0	▲	25A/RS	120-130	120	Frost Rough Service	R, C-9		3 15/16	1000		235			
			37387-8	□	25A19/35	120-130	60	Frost Industrial Service	B, C-9		3 15/16	3500		220			
			R-14	Inter.		24828-6	■	25R12/RI4N Replaces 25R12N & 25R14	120	24	Mini-Ref. Lt. Fr. Actual Bulb Dia. 1 1/2"	C, CC-2V		2 3/8	1500		200
			S-11		S.C. Bay	29102-1		25S11/4SC/6	10	120	Railroad Signal	C, CC-6	1 1/4	2 3/8	6000		
				Cand.		23603-4	▲ (2)	25S11/2C	120	24	Clear Headlamp	B, C-7A	1 3/8	2 1/4	500		220
	T-6 1/2	Inter.		37388-6	▲	25T6-1/2IF	120-130	24	Frost Appliance	B, C-8		5 1/2	1000		210		
				37389-4	▲	25T6-1/2	120-130	24	Clear Appliance	B, C-8		5 1/2	1000		220		
		D.C. Bay		37391-0		25T6-1/2DC/IF	120-130	24	Frost Appliance	B, C-8		5 1/2	1000		210		
				37392-8		25T6-1/2DC	120-130	24	Clear Appliance	B, C-8		5 1/2	1000		220		
T-8	D.C. Bay		29909-9	(4)	BC25T8DC 12/I	120	12	Clear Appliance	B, C-7A		2 3/8			210			
			24827-8	(4)	25T8DC	120	24	Clear Appliance	B, C-7A		2 3/8			210			
	Cand.		23592-9	▲ (4)	25T8C	120	24	Clear Appliance	B, C-7A		2 3/8			220			
	Inter.		23593-7	▲ (4)	25T8N	120	24	Clear Appliance	B, C-7A		2 3/8			220			
T-10	Med.		39040-1	▲	BC25T10/IF/TP 6/I	120	6	Frost Showcase	B, C-8		5 3/8	1000		235			
			13812-3	▲	25T10/IF 24/I	120-130	24	Frost Showcase	B, C-8		5 3/8	1000		235			
			38985-8	▲	BC25T10/TP 6/I	120	6	Clear Showcase	B, C-8		5 3/8	1000		240			
			13813-1	▲	25T10 24/I	120-130	24	Clear Showcase	B, C-8		5 3/8	1000		240			

For the most current product information, go to the e-catalog on www.philips.com

Incandescent symbols and footnotes located on page 44

Watts	Bulb	Base	Product Number	Symbols, Footnotes	Ordering Code	Volts	Pkg. Qty.*	Description	Class, Filament	LCL (In.)	MOL (In.)	Rated Avg. Life, Hrs (93)	Approx. MBCP*	Lumens		
30	A-15	Med.	30448-5		30A15	130	120	Frost Sign Service Ratings @ 120V = 27W	C, C-9		3 ½	8000 22828		155 118		
			30452-7		30A15/CL	130	120	Clear Sign Service Ratings @ 120V = 27W	C, C-9	2 ¾	3 ½	8000 22828		155 118		
	R-20	Med.	22078-0	▲ (87)	30R20 12/I	130	12	Lt. Frost Reflector	C, CC-6		3 ¾	2000		205		
			20264-8		30R20/SFL	120	60	Lt. Frost Reflector Sign	C, C-9		3 ¾	6000		150		
			22601-9	□ (66)	30R20/SFL/TF	130	60	Frost Silicone Coated Reflector Sign	C, CC-6		3 ¾	6000		135		
			16753-6	▲ (87)	30R20/LL 12/I	120	12	Frost Long Life Reflector	C, CC-6		3 ¾	2500	335	205		
30 70 100	A-21	3 Ct. Med.	16947-4	▲ (8)	30/100A/WL 12/I	120	12	Soft White Long Life 3-Way	C, 2CC-8		5 ¾	1750		285 920 1205		
			36662-5	▲ (8)	30/100A/W 12/I	120	12	Soft White 3-Way	C, 2CC-8		5 ¾	1200		310 945 1255		
33	A-19	Med.	22145-7		33A19/5	130	60	Clear Sign Ratings @ 120V = 29W	C, C-9		3 ¼	3000 8561		220 168		
			30549-0		33A19/GR/CL	130	60	Clear Sign Ratings @ 120V = 29W	B, C-9		3 ¼	3000 8561		220 168		
34	A-19	Med.	22234-9	▲ • \$	40A-34A/EW	120	48	Frost Econ-o-watt	C, CC-6		4 ¾	1500		410		
			22235-6	▲ \$	40A-34A/EW	130	48	Frost Econ-o-watt Ratings @ 120V = 30W	C, CC-6		4 ¾	1500 4245		400 305		
			37397-7	• \$ X	40A-34A/99/EW	120-130	48	Frost Econ-o-watt Extended Service Ratings @ 120V = 32W	C, CC-6		4 ¾	2500 4250		350 304		
40	A-15	Med.	29999-0	▲	BC40A15/CL/LL 12/I	120	12	Clear Longer Life Home Appliance	C, CC-2R		3 ½	1750		400		
			37398-5	▲	40A15	120-130	120	Frost Home Appliance	C, CC-2R		3 ½	1000		415		
			25109-0	▲ □ (66)	40A15/TF	120-130	120	Frost Refrigerator Silicone Coated	C, CC-2R		3 ½	1000				
			16934-2	▲	BC40A15/FAN/CL/LL 6/2	120	12	Clear Long Life Fan	C, CC-2R		3 ½	2000		395		
			16935-9	▲	BC40A15/FAN/W/LL 6/2	120	12	White Long Life Fan	C, CC-2R		3 ½	2000		365		
			20002-2	▲	40A15/22	120	120	Clear Home Oven	C, CC-2R		3 ½	1000		420		
			13565-7	▲	BC40A15/NTL 6/2	120	6	Natural Light Fan	C, CC-2R		3 ½	1500		340		
			A-19	Med.	27081-9	▲	40A 12/4	120	48	Frost	C, CC-6		4 ¾	1500		495
					16797-2	▲	40A/CL/LL 12/2	120	24	Clear Long Life	C, CC-6		4 ¾	1500		505
					16737-9	▲	40A/WL 24/4	120	96	Soft White Long Life	C, CC-6		4 ¾	1500		475
	16869-0	▲			40A/WL 12/4	120	48	Soft White Long Life	C, CC-6		4 ¾	1500		475		
	13558-2	▲			40A/NTL 12/4	120	48	Natural Light Standard	C, CC-6		4 ¾	1000		400		
	37465-2	▲			40A	120	48	Frost	C, CC-6		4 ¾	1500		495		
	37466-0	▲			40A	130	48	Frost Ratings @ 120V = 35W	C, CC-6		4 ¾	1500 4245		490 375		
	30033-5	▲ (66)			40A/TF	120	120	Frost Silicone Coated	C, CC-6		4 ¾	1500				
	37399-3	▲			40A/CL	120-130	48	Clear Ratings @ 120V = 37W	C, CC-6	3 ½	4 ¾	1500 2550		500 435		
	37400-9	▲			40A/99	120-130	48	Frost Extended Service Ratings @ 120V = 37W	C, CC-6		4 ¾	2500 5100		465 405		
	24424-4	▲	BC40A/GD 12/2	120	24	Frost Garage Door	C, C-9		3 ¼	3500		370				
	37481-9	▲	40A/W12/4	120	48	Soft White	C, CC-6		4 ¾	1000		500				
	37482-7	▲	40A/W/TP 24/4	120	96	Soft White Tra-Pak	C, CC-6		4 ¾	1000		500				
35452-2	▲	40A/YL 12/2	120	24	Bug-A-Way® Yellow Longer Life	C, CC-6		4 ¾	1350							
23096-1	□	40A19/35	130	48	Frost Industrial Service Ratings @ 120V = 35W	C, C-9		4 ¼	3500 9987		315 240					

For the most current product information, go to the e-catalog on www.philips.com
Incandescent symbols and footnotes located on page 44

Incandescent

Watts	Bulb	Base	Product Number	Symbols, Footnotes	Ordering Code	Volts	Pkg. Qty.*	Description	Class, Filament	LCL (In.)	MOL (In.)	Rated Avg. Life, Hrs (93)	Approx. MBCP*	Lumens	
40	A-21	Med.	37973-5	X	40A/B	120	120	Blue-Sign	B, C-9		4 7/8	1000			
			14336-2		40A/B	120	120	Blue-Sign	B, C-9		4 7/8	1000			
			37974-3	X	40A/G	120	120	Green-Sign	B, C-9		4 7/8	1000			
			38022-0	X	40A/R	120	120	Red-Sign	B, C-9		4 7/8	1000			
			14337-0		40A/R	120	120	Red-Sign	B, C-9		4 7/8	1000			
			38024-6	X	40A/Y	120	120	Yellow-Sign	B, C-9		4 7/8	1000			
			14338-8		40A/Y	120	120	Yellow-Sign	B, C-9		4 7/8	1000			
	K-19	Med.	30728-0	▲	40K19/DL 6/2	120	12	Director®	C, C-9		4 1/2	1150		500	
	R-14	Med.	35454-8		40R14/SP	120	24	Light Fr. Mini. Refl.	C, CC-2V		2 3/8	1500		250	
	S-11	Inter.	21216-7	▲	BC40S11/NTP 16/1	120	16	Clear High Intensity	C, CC-2V		2 1/4	500		440	
			24830-2	▲	40S11N/IF	120	24	Frost High Intensity	C, CC-2V		2 1/4	500		420	
	T-6 1/2	Inter.	24850-0	▲	40T6-1/2	120	24	Clear Refrigerator	B, C-8		5 1/2	1000		350	
			24852-6	▲	40T6-1/2IF	120	24	Frost Refrigerator	B, C-8		5 1/2	1000		340	
			20491-7	▲	BC40T6-1/2/2 12/1	120	12	Clear Refrigerator	B, C-8		5 1/2	1000		350	
	T-10	Med.	38989-0	▲	BC40T10/IF/TP 6/1	120	6	Frost Showcase	B, C-8		5 3/8	1000		420	
			13814-9	▲	40T10/IF 24/1	120-130	24	Frost Showcase	B, C-8		5 3/8	1000		420	
			38988-2	▲	BC40T10/TP 6/1	120	6	Clear Showcase	B, C-8		5 3/8	1000		425	
		Med. Pf.	13815-6	▲	40T10 24/1	120-130	24	Clear Showcase	B, C-8		5 3/8	1000		425	
			21941-0	X	40T10P	120	60	Aviation Airport Marker	C, CC-2V	1 1/2	3 1/8	1000		400	
14406-3				40T10P	120	60	Aviation Airport Marker	C, CC-2V	1 1/2	3 1/8	1000		400		
45	BR-30	Med.	16751-0	▲ (87)	45BR30/FL55/LL 12/1	120	12	Long Life Reflector Flood	C, CC-6		5 3/8	2500		340	
50	A-19	Med.	34765-8	X	50A	24	120	Frost Train	C, C-6		4 1/4	1000			
			14154-9	▲	50A	24	120	Frost Train	C, C-6		4 1/4	1000		700	
			14155-6	▲	50A	34	120	Frost Train	C, C-6		4 1/4	1000		750	
			24569-6	▲	50A	250	120	Frost	C, RC-9		3 1/8	1000			
			24324-6	▲ X	50A/RS	34	120	Frost Rough Serv. Train	B, C-9		3 1/8	1000		500	
			14156-4	▲	50A/RS	34	120	Frost Rough Serv. Train	B, C-9		3 1/8	1000		500	
			24326-1	▲	50A19/RS	75	120	Frost Rough Serv. Train	B, RC-9		3 1/8	1000		500	
			21952-7	▲	50A19/31	120	120	Clear Commercial Oven	B, C-9	2 1/2	3 1/8	1000		500	
			37403-3	▲	50A/RS	120-130	120	Frost Rough Service Ratings @ 120V =47W	B, RC-9		3 1/8	1000		1700	440
			20163-2	▲	50A/RS 12/2	120	24	Frost Rough Service	B, RC-9		3 1/8	1000		480	
			24572-0	▲	50A/RS	250	120	Frost Rough Service	C, RC-9		3 1/8	1000		355	
			30034-3	▲ (66)	50A/RS/TF	120-130	120	Frost Rough Service Silicone Coated	B, RC-9		3 1/8	1000			
	BR-19	Med.	16750-2	▲ \$ □ (66)	50BR19/25/SP/LL	120	12	Long Life Spotline Reflector	C, CC-11		4 1/8	2500	635	385	
	BR-30	Med.	24889-8	▲	50BR30/FL	120	12	Reflector Flood	C, CC-6		5 3/8	2000			
	ER-30	Med.	37404-1	▲ \$ (87) X	50ER30	120-130	24	Elliptical Reflector	C, CC-6		6 3/8	2000			
			14355-2	▲ \$ (87)	50ER30	120-130	24	Elliptical Reflector	C, CC-6		6 3/8	2000		400	
	PAR-36	M.P.	29603-8		50PAR36/WFL	12	12	Compact Wide Flood	C, C-6		2 3/4	2000			
			22859-3		50PAR36/NSP/8	12	12	Compact Narrow Spot	C, C-6		2 3/4	2000			
	P-25	3 Ct. Mog.	22018-6	(15)	50/50P25/28	120	60	Clear Marine	C, C-5, C-9	3 3/8	5 1/8	750		375	
R-20	Med.	22082-2	▲ (87)	50R20 12/1	130	12	Lt. Frost Reflector	C, CC-6		3 1/8	2000		380		
		26635-3	▲ (19,87) X	50R20/PK	120	60	Pink Reflector	C, CC-6		3 1/8	2000				
		14349-5	▲ (19,87)	50R20/PK	120	60	Pink Reflector	C, CC-6		3 1/8	2000				
		16755-1	▲ (87)	50R20/LL 12/1	120	12	Frost Long Life Reflector	C, CC-6		3 1/8	2500		385		
		13797-5	▲ (87)	50R20/FL/NTL 12/1	120	12	Natural Light Reflector	C, CC-6		3 1/8	2000		265		
		167098	▲ (19,87)	50R20/Agro 12/1	120	12	Agro-Lite Plant Light	C, CC-6		3 1/8	2000				
50 100 150	A-21	3 Ct. Med.	36671-6	▲ (8)	50/150A/W 12/1	120	12	Soft White 3-Way	C, 2CC-8		5 3/8	1200		610 1510 2120	
			31739-6	▲ (8)	50/150A/STP/PK 8/1	120	8	Pink Softone Pastel® 3-Way	C, 2CC-8		5 3/8	1200		550 1310 1860	
			13564-0	▲ (8)	50/150A/NTL 12/1	120	12	Natural Light Reflector	C, 2CC-8		5 3/8	1200		490 1250 1740	
			16948-2	▲ (8)	50/150A/WL 12/1	120	12	Soft White Long Life 3-Way	C, 2CC-8		5 3/8	1750		575 1440 2015	

For the most current product information, go to the e-catalog on www.philips.com
Incandescent symbols and footnotes located on page 44

Watts	Bulb	Base	Product Number	Symbols, Footnotes	Ordering Code	Volts	Pkg. Qty.*	Description	Class, Filament	LCL (In.)	MOL (In.)	Rated Avg. Life, Hrs (93)	Approx. MBCP*	Lumens
50 100 150	A-21	3 Ct. Med.	16717-1	▲ (8)	DIS 50/150A/WL 48/I	120	48	Soft White Long Life 3-Way	C, 2CC-8		5 7/8	1750		575 1440 2015
			32359-2	▲ □ (8)	50/150A/DL 12/I	120	12	Director® 3-Way	C, 2CC-8		5 7/8	1200		
50 200 250	A-21	3 Ct. Med.	16949-0	▲ (8)	50/250A/WL 12/I	120	12	Soft White Long Life 3-Way	C, 2CC-8		5 7/8	1750		575 3120 3695
51	A-19	Med. +	20555-9	X	51A19/RR/TS	130	20	Clear Ring Reflector Traffic Signal	C, C-7A	2 7/8	3 3/4	8000		380
52	A-19	Med.	22237-2	▲ •	60A-52A/EW	120	48	Frost Econ-o-watt	C, CC-6		4 7/8	1000		700
			22239-8	▲ \$	60A-52A/EW	130	48	Frost Econ-o-watt Ratings @ 120V =46W	C, CC-6		4 7/8	1000	2830	550
			37459-5	▲ \$ X	60A-52A/99/EW	120-130	48	Frost Econ-o-watt Extended Service Ratings @ 120V =49W	C, CC-6		4 7/8	2500	4250	605
			14999-6	▲ \$	60A-52A/99/EW	120-130	48	Frost Econ-o-watt Extended Service Ratings @ 120V =49W	C, CC-6		4 7/8	2000	3400	564 660
54	A-19	Med.	37166-6	\$ (12)	K54A19/TS/EW	120-125	120	Clear Krypton Econ-o-watt Traffic Signal	C, C-11V	2 7/8	4 3/8	8000		530
60	A-15	Med.	16945-8	▲	BC60A15/FAN/W/LL 6/2	120	12	White Long Life Fan	C, CC-2R		3 1/2	2000		570
			16946-6	▲	BC60A15/FAN/CL/LL 6/2	120	12	Clear Long Life Fan	C, CC-2R		3 1/2	2000		630
	A-19	Med.	16794-0	▲	60A/CL/LL 12/2	120	24	Clear Long Life	C, CC-6		4 7/8	1500		900
			16738-7	▲	60A/WL 24/4	120	96	Soft White Long Life	C, CC-6		4 7/8	1500		830
			16874-0	▲	60A/WL 12/4	120	48	Soft White Long Life	C, CC-6		4 7/8	1500		830
			13559-0	▲	60A/NTL 12/4	120	48	Natural Light Standard	C, CC-6		4 7/8	1000		680
			27082-7	▲ •	60A 12/4	120	48	Frost	C, CC-6		4 7/8	1000		890
			37469-4	▲ •	60A	120	48	Frost	C, CC-6		4 7/8	1000		890
			37471-0	▲ •	60A	130	48	Frost Ratings @ 120V =53W	C, CC-6		4 7/8	1000	2830	850 650
			30038-4	▲ (66)	60A/TF	120	120	Frost Silicone Coated	C, CC-6		4 7/8	1000		
			22245-5	▲ •	60A/99	120	48	Frost Extended Service	C, CC-6		4 7/8	2500		800
			22246-3	▲ •	60A/99	130	48	Frost Extended Service Ratings @ 120V =53W	C, CC-6		4 7/8	2500	7075	790 595
			37522-0	▲	60A/CL	130	48	Clear Ratings @ 120V =53W	C, CC-6	3 7/8	4 7/8	1000	2830	880 665
			13532-7	▲ X	60A/AGRO 12/I	120	12	Agro-Lite Plant Light	C, C-9		4 7/8	1000		
			14424-6	▲	60A/AGRO 12/I	120	12	Agro-Lite Plant Light	C, C-9		4 7/8	1000		
			38027-9	▲ X	60A/D	120	120	Frost Daylight	C, CC-6		4 7/8	1000		515
			14165 5	▲	60A/D	120	120	Frost Daylight	C, CC-6		4 7/8	1000		515
			37517-0	▲	60A/Y	120-130	48	Bug-A-Way®	C, CC-6		4 7/8	1350		
			37987-5	▲ X	60A19/B	120	60	Blue	C, C-9		4 7/8	1000		
			14164 8	▲	60A19/B	120	60	Blue	C, C-9		4 7/8	1000		
			37977-6	▲ X	60A19/G	120	60	Green	C, C-9		4 7/8	1000		
			14163 0	▲	60A19/G	120	60	Green	C, C-9		4 7/8	1000		
			37976-8	▲ X	60A19/R	120	60	Red	C, C-9		4 7/8	1000		
			14162 2	▲	60A19/R	120	60	Red	C, C-9		4 7/8	1000		
			14399 9	▲	60A/IF/SB	120	120	Frost Silvered Bowl	C, CC-6		4 7/8	1000		810
			28111-3	▲	60A	230	120	Frost	C, RC-9		3 1/8	1000		545
			37483-5	▲ •	60A/W 12/4	120	48	Soft White	C, CC-6		4 7/8	1000		860
			37484-3	▲	60A/W/TP 24/4	120	96	Soft White Tra-Pak	C, CC-6		4 7/8	1000		860
			34822-7	▲ □	60A/STP/PK 12/2	120	24	Pink Softone Pastel®	C, CC-6		4 7/8	1000		
			22573-0	▲ • □	60A/YL 12/2	120	24	Bug-A-Way® Yellow Longer Life	C, CC-6		4 7/8	1350		
			22247-1	□	60A19/35	120	48	Frost Industrial Service	C, C-9		4 7/8	3500		600

+ Pursuant to California law, these incandescent lamps cannot be used or offered for sale for use in traffic signals in the State of California.

For the most current product information, go to the e-catalog on www.philips.com

Incandescent symbols and footnotes located on page 44

Incandescent

Watts	Bulb	Base	Product Number	Symbols, Footnotes	Ordering Code	Volts	Pkg. Qty.*	Description	Class, Filament	LCL (In.)	MOL (In.)	Rated Avg. Life, Hrs (93)	Approx. MBCP	Lumens	
60	A-19	Med.	22248-9	☐	60A19/35	130	48	Frost Industrial Service Ratings @ 120V =53W	C, C-9		4 7/8	3500 9987		585 446	
			25836-8	☐(66)	60A35/TF	120	60	Frost Silicone Coated Industrial Service	C, C-9		4 7/8	3500			
			+	21056-7	\$ (12)	K60A19/TS/EW	120-125	120	Clear Krypton Econ-o-watt Traffic Signal	C, C-11V	2 7/8	4 3/8	8000		610
			+	37167-4	\$ (12)	K60A19/TS/EW	130	120	Clear Krypton Econ-o-watt Traffic Signal	C, C-11V	2 7/8	4 3/8	8000		610
	K-19	Med.	22486-5	▲ ☐	60K19/DL 6/2	120	12	Director®	C, CC-6		4 1/8	1150		770	
	T-10	Med.	13811-5	▲	60T10/64IF 24/I	120	24	Frost	B, C-8		5 3/8	1000		660	
			13810-7	▲	60T10/64 24/I	120	24	Clear	B, C-8		5 3/8	1000		665	
	65	BR-30	Med.	24876-5	▲ • (87)	65BR30/FL55 12/I	120	12	Reflector Flood	C, CC-6		5 3/8	2000		635
				24884-9	▲ • (87)	65BR30/FL55	130	12	Reflector Flood	C, CC-6		5 3/8	2000		635
				24877-3	▲ (87)	65BR30/SP20 12/I	120	12	Reflector Spot	C, CC-6		5 3/8	2000		655
24880-7				▲ (87)	65BR30/SP20	130	12	Reflector Spot	C, CC-6		5 3/8	2000		655	
24452-5				(87)	65BR30/SFL	120	24	Reflector Sign Frost	C, C-17A		5 3/8	5000		635	
13785-1				▲ (87)	65BR30/FL/NTL 12/I	120	12	Natural Light Reflector	C, CC-6		5 3/8	2000		500	
16768-4				▲ (87)	65BR30/FL55/LL 12/I	120	12	Long Life Reflector Flood	C, CC-6		5 3/8	2500	510	595	
16769-2				▲ (87)	65BR30/SP20/LL 12/I	120	12	Long Life Reflector Spot	C, CC-6		5 3/8	2500	530	610	
BR-40		Med.	22537-5	▲ • (87)	65BR/FL60	130	24	Reflector Flood	C, CC-6		6 1/2	2000		685	
			22546-6	▲ (87)	65BR/SP20	120-130	24	Reflector Spot	C, CC-6		6 1/2	2000		655	
			16741-1	▲ (87)	65BR/FL60/LL 8/I	120	8	Long Life Reflector Flood	C, CC-6		6 1/2	2500	500	630	
			38913-0	▲ (87)	65BR/FL60 24/I	120	24	Long Life Reflector Flood	C, CC-6		6 1/2	2000	500	630	
			67	A-19	Med.	22240-6	▲ • \$	75A-67A/EW	120	48	Frost Econ-o-watt	C, CC-6		4 7/8	750
22241-4	▲ • \$	75A-67A/EW	130	48	Frost Econ-o-watt Ratings @ 120V =59W	C, CC-6		4 7/8	750		990		805		
37405-8	▲ • \$ X	75A-67A/99/EW	120-130	48	Frost Econ-o-watt Extended Service Ratings @ 120V =63W	C, CC-6		4 7/8	2500		4250		780		
15000-3	▲ \$	75A-67A/99/EW	120-130	48	Frost Econ-o-watt Extended Service Ratings @ 120V =63W	C, CC-6		4 7/8	2000		3400		840		
A-21	Med.	+	22192-9	• (12)	67A21/99TS	120	120	Clear Traffic Signal	C, C-11V		4 7/8	8000		610	
+	22197-8	• (12)	67A21/99TS	130	120	Clear Traffic Signal	C, C-11V	2 7/8	4 7/8	8000		610			
69	A-21	Med.	+	22199-4	• (12)	69A21/TS	120	120	Clear Traffic Signal	C, C-9	2 7/8	4 7/8	8000		685
			+	22204-2	• (12)	69A21/TS	130	120	Clear Traffic Signal	C, C-9	2 7/8	4 7/8	8000		685
			75	A-19	Med.	37472-8	▲ •	75A	120	48	Frost	C, CC-6		4 7/8	750
16801-3	▲	75A/CL/LL 12/2	120			24	Clear Long Life	C, CC-6		4 7/8	1500		1080		
16879-9	▲	75A/WL 12/4	120			48	Soft White Long Life	C, CC-6		4 7/8	1500		1060		
16739-5	▲	75A/WL 24/4	120			96	Soft White Long Life	C, CC-6		4 7/8	1500		1060		
13560-8	▲	75A/NTL 12/4	120			48	Natural Light Standard	C, CC-6		4 7/8	750		950		
27083-5	▲ •	75A 12/4	120			48	Frost	C, CC-6		4 7/8	750		1220		
37473-6	▲	75A	130			48	Frost Ratings @ 120V =66W	C, CC-6		4 7/8	750		2120	860	
37406-6	▲ •	75A/99	120-130			48	Frost Extended Service Ratings @ 120V =70W	C, CC-6		4 7/8	2500		4250	1070	
29360-5	▲	75A/RS/VS	120-130			12	Frost Rough & Vib. Serv. Ratings @ 120V =70W	R, C-9	2 1/2	3 1/8	1000		1700	712	
37525-3	▲	75A/CL	130			48	Clear Ratings @ 120V =66W	C, CC-6	3 1/8	4 7/8	750		2140	1195	
37485-0	▲ •	75A/W 12/4	120			48	Soft White	C, CC-6		4 7/8	750		1180		
37486-8	▲	75A/W/TP 24/4	120			96	Soft White Tra-Pak	C, CC-6		4 7/8	750		1180		
A-21	Med.	31305-6	▲			75A21	120-130	120	Frost Ratings @ 120V =66W	C, CC-8		5 3/8	1000		1200
20922-1	▲ (66)	75A/RH/TF 12/I	120-130			12	Frost Silicone Coated Tough Bulb	C, RC-9		5 3/8	1000		2854	858	

† Pursuant to California law, these incandescent lamps cannot be used or offered for sale for use in traffic signals in the State of California.

For the most current product information, go to the e-catalog on www.philips.com

Incandescent symbols and footnotes located on page 44

Watts	Bulb	Base	Product Number	Symbols, Footnotes	Ordering Code	Volts	Pkg. Qty.*	Description	Class, Filament	LCL (In.)	MOL (In.)	Rated Avg. Life, Hrs (93)	Approx. MBCP	Lumens
75	A-21	Med.	20470-1	▲	75A/RH 12/1	120-130	12	Frost Rough House Ratings @ 120V =70W	C, RC-9		5 3/8	1000 1700		750 730
			14345-3	▲	75A2I	12	120	Frost	C, C-6		5 3/8	1000		1100
	BR-30	Med.	24903-7	▲ (66, 87)	75BR30/FL/TF	120	12	Frost Silicone Coated Reflector	C, CC-6		5 3/8	2000		
			24905-2	▲ (87)	75BR30/AGRO 6/I	120	6	Agro-Lite Plant Light	C, CC-6		5 3/8	2000		700
			24904-5	▲ (87)	75BR30/B 8/I	120	8	Blue	C, CC-6		5 3/8	2000		
			24902-9	▲ (87)	75BR30/PK 8/I	120	8	Pink	C, CC-6		5 3/8	2000		
			24899-7	▲ (87)	75BR30/R 8/I	120	8	Red	C, CC-6		5 3/8	2000		
	ER-30	Med.	20572-4	▲ \$ X (19,37,87)	75ER30	120	24	Elliptical Reflector	C, CC-6		6 3/8	2000		
			14353-7	▲ \$ (19,37,87)	75ER30	120	24	Elliptical Reflector	C, CC-6		6 3/8	2000		660
			29636-8	▲ \$ X (19,37,87)	75ER30	130	24	Elliptical Reflector	C, CC-6		6 3/8	2000		
			14354-5	▲ \$ (19,37,87)	75ER30	130	24	Elliptical Reflector	C, CC-6		6 3/8	2000		650
	K-19	Med.	22487-3	▲ □	75K19/DL 6/2	120	12	Director®	C, CC-6		4 1/8	1150		1000
	R-20	Med.	16763-5	▲ □ (87)	75R20/LL 12/1	120	12	Frost Long Life Reflector	C, CC-6		3 1/8	2500	800	570
	85	BR-30	Med.	16766-8	▲ (87)	85BR30/FL55/LL 6/I	120	6	Long Life Reflector Flood	C, CC-6		5 3/8	2500	700
			16767-6	▲ (87)	85BR30/SP20/LL 6/I	120	6	Long Life Reflector Spot	C, CC-6		5 3/8	2500	3100	865
BR-40		Med.	22527-6	▲ • (87)	85BR/FL60	120	24	Reflector Flood	C, CC-6		6 1/2	2000		900
			22528-4	▲ • (87)	85BR/FL60	130	24	Reflector Flood	C, CC-6		6 1/2	2000		925
			14579-7	▲ (87)	85BR/FL/NTL 8/I	120	8	Natural Light Reflector	C, CC-6		6 1/2	2000		640
			16785-8	▲ (87)	85BR/FL60/LL 8/I	120	8	Long Life Reflector Flood	C, CC-6		6 1/2	2500	700	900
			16788-2	▲ (87) X	85BR/SP20/LL 8/I	120	8	Long Life Reflector Spot	C, CC-6		6 1/2	2500	3100	900
90	A-19	Med.	22243-0	▲ • \$	100A-90A/EW	120	48	Frost Econ-o-watt	C, CC-6		4 7/8	750		1445
			37390-2	▲ \$ X	100A-90A/99EW	120-130	48	Frost Econ-o-watt Extended Service Ratings @ 120V =84W	C, CC-6		4 7/8	2500		1185
			15001-1	▲ \$	100A-90A/99EW	120-130	48	Frost Econ-o-watt Extended Service Ratings @ 120V =84W	C, CC-6		4 7/8	1500		1400
			37168-2	\$ (12)	K90A19/TS/EW	120-125	120	Clear Krypton Econ-o-watt Traffic Signal	C, C-11V	2 3/8	4 3/8	8000		1040
			37615-2	\$ (12)	K90A19/1/TS/EW	120-125	120	Clear Krypton Econ-o-watt Traffic Signal	C, C-11V	3	4 3/8	8000		1040
	A-21	Med.	26829-2	\$ □	90A21/35	130	60	Frost Econ-o-watt Industrial Service Ratings @ 120V =80W	C, C-9		5 3/8	3500		1050
												9987		801
100	A-19	Med.	27086-8	▲	100A 12/4	120	48	Frost	C, CC-6		4 7/8	750		1600
			37474-4	▲ • X	100A	120	48	Frost	C, CC-6		4 7/8	750		1600
			13684-6	▲ •	100A	120	48	Frost	C, CC-8		4 7/8	750		1710
			37476-9	▲ •	100A	130	48	Frost Ratings @ 120V =88W	C, CC-6		4 7/8	750		1590
												2120		1205
			22978-1	▲ •	100A/99	120	48	Frost Extended Service	C, CC-6		4 7/8	2500		1500
			22979-9	▲ •	100A/99	130	48	Frost Extended Service Ratings @ 120V =88W	C, CC-6		4 7/8	2500		1470
												7075		1110
			37527-9	▲	100A/CL	130	48	Clear Ratings @ 120V =88W	C, CC-6	3 1/2	4 7/8	750		1590
												2120		1205
			13254-8	▲ •	100A/W 12/4	120	48	Soft White	C, CC-6		4 7/8	750		1620
			13561-6	▲	100A/NTL 12/4	120	48	Natural Light Standard	C, CC-6		4 7/8	750		1350
			16795-6	▲	100A/CL/LL 12/2	120	24	Clear Long Life	C, CC-6		4 7/8	1500		1580
			16740-3	▲	100A/WL 24/4	120	96	Soft White Long Life	C, CC-8		4 7/8	1500		1550
			13255-5	▲	100A/W/TP 24/4	120	96	Soft White Tra-Pak	C, CC-6		4 7/8	750		1620
		22581-3	▲ • □	100A/YL 12/2	120	24	Bug-A-Way® Yellow Longer Life	C, CC-6		4 7/8	1350			
		16862-5	▲	100A/WL 12/4	120	48	Soft White Long Life	C, CC-8		4 7/8	1500		1550	

† Pursuant to California law, these incandescent lamps cannot be used or offered for sale for use in traffic signals in the State of California.

For the most current product information, go to the e-catalog on www.philips.com

Incandescent symbols and footnotes located on page 44

Incandescent

Watts	Bulb	Base	Product Number	Symbols, Footnotes	Ordering Code	Volts	Pkg. Qty.*	Description	Class, Filament	LCL (In.)	MOL (In.)	Rated Avg. Life, Hrs (93)	Approx. MBCP	Lumens	
100	A-19	Med. LHT	37414-0	(18)	100A/LHT	120-130	48	Frost	C, CC-6		4 7/8	750		1560	
	A-21	Med.	34803-7	▲ X	100A	12	120	Frost	C, C-6		5 3/8	1000			
			14346-1	▲	100A	12	120	Frost	C, C-6		5 3/8	1000		1500	
			28171-7	▲	100A21	120-130	120	Frost	C, CC-8		5 3/8	750		1680	
												1280		1463	
									Ratings @ 120V =94W						
												750			
				30051-7	▲ (66)	100A21/TF	120	120	Frost Silicone Coated	C, CC-8		5 3/8	750		
				29956-0	▲	100A	230	120	Frost	C, C-9		5 3/8	1000		1270
				29955-2	▲	100A	250	120	Frost	C, C-9		5 3/8	1000		1270
				24661-1	▲	100A	277	120	Frost Mine	C, C-9		5 3/8	1000		1070
				37460-3	▲	100A21/99	120-130	60	Frost Extended Service	C, CC-8		5 3/8	2500		1475
									Ratings @ 120V =94W			4250		1280	
				38026-1	▲ X	100A/D	120	60	Frost Daylight	C, C-9		5 3/8	750		900
				14340-4	▲	100A/D	120	60	Frost Daylight	C, C-9		5 3/8	750		900
				37969-3	▲ (43,64) X	100A/ISBIF	120	120	Frost Silvered Bowl	C, CC-6		5 3/8	1000		
				14400-6	▲ (43,64)	100A/ISBIF	120	120	Frost Silvered Bowl	C, CC-6		5 3/8	1000		1150
				27985-1	▲ (66)	100A/RS/TF	120-130	60	Frost Silicone Coated	C, RC-9		5 3/8	1000		
									Rough Service						
				27550-3	▲	100A/RS	250	60	Frost Rough Service	C, RC-9		5 3/8	1000		1030
				27560-2	▲	100A/CL/RS/VS	120-130	60	Clear Rough & Vibration Service	C, RC-9	3 3/8	5 3/8	1000		1100
									Ratings @ 120V =94W			1700		945	
				37411-6	□	100A21/35	120-130	60	Frost Industrial Service	C, C-9		5 3/8	3500		1175
								Ratings @ 120V =94W			5975		1015		
			25838-4	□ (14, 66)	100A21/35/TF	120	60	Frost Silicone Coated	C, C-9		5 3/8	3500			
								Industrial Service							
			27569-3		100A/RS/VS/BR	120-130	60	Frost Rough & Vibration Service	C, RC-9		5 3/8	1000		1230	
								Ratings @ 120V =94W			1700		945		
			22390-9	(12)	100A21/TS	130	120	Clear Traffic Signal	C, C-9	2 7/8	4 7/8	2000		1260	
	A-23	Med.	22430-3	▲	100A23	120	120	Frost	C, CC-6		6 3/8	750		1730	
	F-20	Med.	16844-3		100F20/POSTLT/CL/LL 6/1	120	6	Clear Long Life PostLight	C, C-9		5 3/8	4000		1250	
	PAR-38	Med. Skt.	36235-0	(29, 82)	100PAR/A 6/1	120	6	Amber PAR	C, CC-6		5 3/8	2000			
			20177-2	(29, 82)	100PAR/B 6/1	120	6	Blue PAR	C, CC-6		5 3/8	2000			
			20186-3	(29, 82)	100PAR/G 6/1	120	6	Green PAR	C, CC-6		5 3/8	2000			
			20228-3	(29, 82)	100PAR/R 6/1	120	6	Red PAR	C, CC-6		5 3/8	2000			
			20232-5	(29, 82)	100PAR/Y 6/1	120	6	Yellow PAR	C, CC-6		5 3/8	2000			
			36249-1	(29, 82)	100PAR/PK 6/1	120	6	Pink PAR	C, CC-6		5 3/8	2000			
			14550-8	(29, 82)	100PAR38/HEAT/CL	120	12	Clear PAR Infrared	C, C-9		5 3/8				
			22191-1	(29, 82) X	100PAR38/HEAT/CL	120	15	Clear PAR Infrared	C, C-9		5 3/8				
	K-19	Med.	22491-5	▲ □	100K19/DL 6/2	120	12	Director®	C, CC-6		4 1/8	1150		1450	
	R-20	Med.	14174-7	■	100R20/FL/S	12	60	Clear Reflector Flood	C, C-6		3 1/8	2000		1000	
								Swimming Pool							
			16701-5	▲ □ (82)	100R20/LL 12/1	120	12	Frost Long Life Reflector	C, CC-6		3 1/8	2500		935	
100 200 300	PS-25	3 Ct. Mog.	36734-2	▲ (8)	100/300/W 12/1	120	12	Soft White 3-Way	C, 2CC-6		6 1/8	1200		1320 3300 4620	
116	A-21	Med.	22483-2	(12)	116A21/TS	120	120	Traffic Signal Clear	C, C-9	2 7/8	4 7/8	8000		1260	
			22485-7	(12)	116A21/TS	130	120	Traffic Signal Clear	C, C-9	2 7/8	4 7/8	8000		1260	
120	BR-40	Med.	22541-7	▲ (87)	120BR/FL60	120	24	Reflector Flood	C, CC-6		6 1/2	2000		1300	
			22532-6	▲ (87)	120BR/FL60	130	24	Reflector Flood	C, CC-6		6 1/2	2000		1300	
			22544-1	▲ (87)	120BR/SP20	120-130	24	Reflector Spot	C, CC-6		6 1/2	2000		1250	
			16779-1	▲ (87)	120BR/FL60/LL 8/1	120	8	Long Life Reflector Flood	C, CC-6		6 1/2	2500	1000	1285	
			16781-7	▲ (87)	120BR/SP20/LL 8/1	120	8	Long Life Reflector Spot	C, CC-6		6 1/2	2500	4600	1225	
			167155	▲ (87)	120BR/Agro 6/1	120	6	Agro-Lite Plant Light	C, CC-6		6 1/2	2000			
	ER-40	Med.	21562-4	▲ \$ X	120ER40	120	24	Elliptical Reflector	C, CC-6		7 3/8	2000		1190	
		21565-7	▲ \$ X	120ER40	130	24	Elliptical Reflector	C, CC-6		7 3/8	2000		1190		
		13928-7	▲ \$	120ER40	120-130	24	Elliptical Reflector	C, CC-6		7 3/8	2000		1250		

† Pursuant to California law, these incandescent lamps cannot be used or offered for sale for use in traffic signals in the State of California.

For the most current product information, go to the e-catalog on www.philips.com

Incandescent symbols and footnotes located on page 44

Watts	Bulb	Base	Product Number	Symbols, Footnotes	Ordering Code	Volts	Pkg. Qty.*	Description	Class, Filament	LCL (In.)	MOL (In.)	Rated Avg. Life, Hrs (93)	Approx. MBCP	Lumens	
124	A-21	Med.	20556-7	\$ □	124A21/RR/TS	120	20	Clear Ring Reflector Traffic Signal	C, C7A		4 7/8	8000		1150	
			20557-5	X	124A21/RR/TS	125	20	Clear Ring Reflector	C, C7A	3	4 7/8	8000		1125	
			20558-3		124A21/RR/TS	130	20	Clear Ring Reflector Traffic Signal	C, C7A	3	4 7/8	8000		1100	
125	BR-40	Med.	38931-2	▲ (27,87,89)	125BR40/I 4/I	120	4	Clear Reflector Infrared	C, C-9		6 1/2				
	T-10	Med. Pf.	23640-6	X (8)	125T10P	120	24	Spotlight	C, C-13	2 3/8	5 3/8	500		1740	
135	A-21	Med.	28175-8	▲ \$	150A-135A/EW	120-130	60	Frost Econ-o-watt Ratings @ 120V=127W	C, CC-8		5 3/8	750 1280		2490 2169	
			37464-5	▲ \$ X	150A-135A/99/EW	120-130	60	Frost Econ-o-watt Ratings @ 120V=126W	C, CC-8		5 3/8	2500 4250		2030 1760	
			15002-9	▲ \$	150A-135A/99/EW	120-130	60	Frost Econ-o-watt Ratings @ 120V=119W	C, CC-8		5 3/8	1000 1700		2300 2000	
			37616-0	\$ (12)	K135A21/TS/EW	120-125	120	Clear Krypton Econ-o-watt Traffic Signal	C, C-11V	3	4 1/8	8000		1750	
	A-25	Med.	26836-7	X \$ □	135A25/35	130	60	Frost Econ-o-watt Industrial Service Ratings @ 120V=119W	C, C-9		6 1/8	3500 9987		1865 1423	
			150	A-21	Med.	27003-3	▲ •	150A	120	48	Frost	C, CC-8		5 3/8	750
	27069-4	▲ •				150A	130	48	Frost Ratings @ 120V=133W	C, CC-8		5 3/8	750 2140		2800 2174
	37417-3	▲ • (82)				150A/99	120-130	60	Frost Extended Service Ratings @ 120V=141W	C, CC-8		5 3/8	2500 4250		2445 2115
37418-1	▲ (82)	150A/CL				120-130	60	Clear Ratings @ 120V=141W	C, CC-8	3 7/8	5 3/8	750 1275		2815 2440	
27983-6	▲ (66)	150A21/RS/TF				120-130	60	High-Temp. Coating	C, RC-9		5 3/8	1000		2140	
16799-8	▲	150A/CL/LL 12/I				120	12	Clear Long Life	C, CC-8		5 3/8	1500		2600	
16866-6	▲	150A/WL 12/I				120	12	Soft White Long Life	C, CC-8		5 3/8	1500		2310	
27578-4	▲	150A21/RS/BR				120-130	60	Frost Rough & Vibration Service Ratings @ 120V=141W	C, RC-9		5 3/8	1000 1700		2205 1915	
27586-7	▲	150A21/CL/RS/VS				120-130	60	Clear Rough & Vibration Service Ratings @ 120V=141W	C, RC-9	3 7/8	5 3/8	1000 1700		2200 1915	
32357-6	▲ □ (8)	150A/DL 12/I				120	12	Director®	C, CC-8		5 3/8	1000			
27588-3	▲	150A/35/RS/BR				120-130	60	Frost Industrial Rough Service Ratings @ 120V=141W	C, RC-9	3 7/8	5 3/8	3500 5900		1640 1425	
A-23	Med. LHT	Med.				28170-9	(18)	150A23/LHT	120-130	60	Frost	C, CC-8		6 3/8	750
			37419-9	▲	150A23/CL	120-130	60	Clear Ratings @ 120V=141W	C, CC-8	4 7/8	6 3/8	750 1275		2855 2475	
A-25	Med.		37421-5	□	150A25/35	120-130	60	Frost Industrial Service Ratings @ 120V=141W	C, C-9		6 3/8	3500 5975		1825 1642	
			22965-8	□ (14,66)	150A25/35/TF	120	60	Frost Silicone Coated Industrial Service	C, C-9		6 1/8	3500			
BR-40	Med.		22725-6	▲ (87)	150BR/AGRO 6/I	120	6	Agro-Lite Plant Light	C, CC-6		6 1/2	2000			
P-25	Med.		14402-2		150P25/2SB	120	60	Clear Spotlight	C, C-5		4 3/8	200	1700		
			14401-4		150P25/10	120	60	Light Frost Spotlight	C, C-5	3	4 3/8	200	2100		
BR-38	Med.		38568-2		150PAR/I/5FL	130	12	PAR Flood Anti-Vibration	C, C-11V		5 1/2	5000			
PS-25	Med.		28173-3	▲	150	120-130	60	Frost Ratings @ 120V=141W	C, C-9		6 1/8	750 1280		2460 2143	
			28174-1	▲	150PS25/99	120-130	60	Frost Extended Service Ratings @ 120V=141W	C, C-9		6 1/8	2500 4268		2080 1812	
			30056-6	▲ (66)	150PS25/TF	120	60	Frost Silicone Coated	C, C-9		6 1/8	1000			
			24684-3	▲	150PS25/99CL	250	60	Clear Extended Service	C, CC-9		6 1/8	2500		1840	

† Pursuant to California law, these incandescent lamps cannot be used or offered for sale for use in traffic signals in the State of California.

For the most current product information, go to the e-catalog on www.philips.com

Incandescent symbols and footnotes located on page 44

Incandescent

Watts	Bulb	Base	Product Number	Symbols, Footnotes	Ordering Code	Volts	Pkg. Qty.*	Description	Class, Filament	LCL (In.)	MOL (In.)	Rated Avg. Life, Hrs (93)	Approx. MBCP	Lumens	
175	PAR-38	Med. Skt.	14551-6	(27, 89)	I75PAR38/HEAT/CL	120	12	Clear Infrared	C, C-9		5 3/8				
			13033-6	(27, 89) X	I75PAR38/HEAT/CL	120	15	Clear Infrared	C, C-9			5 3/8			
189	PS-25	Med.	39423-9		I89PS25/64	125	60	Clear	C, C-9	5 1/4	6 15/16	3000		2900	
200	A-21	Med.	16867-4	▲	200A/WL 6/1	120	6	Soft White Long Life	C, CC-8		5 3/8	1500		3300	
	A-23	Med.	16798-0	▲	200A/CL/LL 6/1	120	6	Clear Long Life	C, CC-8			6 3/8	1500		3665
			36289-7	▲	200A	120	60	Frost	C, CC-8			6 3/8	750		3800
			36291-3	▲	200A	130	60	Frost	C, CC-8			6 3/8	750		3800
									Ratings @120V=177W				2120		2865
			37427-2	▲	200A/CL	120-130	60	Clear	C, CC-8	4 3/8	6 3/8		750		3815
									Ratings @120V=187W				1275		3310
	28176-6	▲	200A/99	120-130	60	Frost Extended Service	C, CC-8			6 3/8	2500		3500		
							Ratings @120V=187W				4268		3014		
	A-25	Med.	39813-1	□	200A25/35	130	60	Frost Industrial Service	C, C-9		6 15/16	3500		2690	
								Ratings @120V=177W			9987		2052		
	BR-40	Med.	14341-2	▲ (87)	200BR/FL	120	24	Reflector Flood	C, C-9			6 1/2	2000		2200
	PAR-56	Mog. End Prong	M-P	23371-8	(10)	200PAR56	30	8	PAR Headlight R.R.	C, CC-6		4 1/2	350		2300
				28956-1	(9,59,90)	200PAR56/MFL	120	8	PAR Med. Flood	C, CC-13			5	2000	
	PS-25	Med.		34974-6	▲	200/IF	250	60	Frost	C, CC-9		6 15/16	1000		3000
				34976-1	▲	200	277	60	Clear Mine	C, CC-9	5 1/4	6 15/16	1000		2650
	PS-30	Med.		22729-8	▲ X	200	130	60	Clear	C, C-9	6	8 3/8	750		3710
								Ratings @120V=177W				2120		2825	
14301-6			▲	200	120-130	60	Clear	C, C-9			8 3/8	750		3250	
								Ratings @120V=177W				2120		2470	
14299-1			▲	200/IF	120-130	12	Clear	C, C-9			8 3/8	750		3200	
								Ratings @120V=177W				2120		2430	
14298-3			▲ (66)	200/TF	120	60	Frost Silicone Coated	C, C-9			8 3/8	750		2980	
14297-5			▲	200/99IF	120-130	60	Clear	C, C-9			8 3/8	750		2600	
								Ratings @120V=177W				2120		1975	
14293-5			▲ (31, 43)	200/SBIF	120-130	60	Frost Silvered Bowl	C, C-9			8 3/8	1000		2700	
								Ratings @120V=177W				2830		2050	
22704-1			▲ X	200PS30/23	120	60	Frost Rough Service	C, C-9			8 3/8	1000		3500	
22732-2			▲ X	200PS30/23	130	60	Frost Rough Service	C, C-9			8 3/8	1000		3500	
								Ratings @120V=177W				2830		2670	
14304-0			▲	200PS30/23	120-130	60	Clear	C, C-9			8 3/8	1000		2800	
								Ratings @120V=177W				2830		2130	
22726-4			▲ X	200PS30/24	130	60	Clear Rough Service	C, C-9	6	8 3/8	1000		3500		
						Ratings @120V=177W				2830		2670			
14303-2	▲	200PS30/24	120-130	60	Clear Rough Service	C, C-9			8 3/8	1000		2900			
						Ratings @120V=177W				2830		2210			
14305-7	▲ (66)	200PS30/RS/TF	120-130	60	Frost Rough Service	C, C-9			8 3/8	1000		2690			
						Silicone Coated				2830		2044			
14302-4	▲	200PS30/RS	250	60	Clear Rough Service	C, C-9			8 3/8	1000		2600			
22995-5	□ X	200/35/TF	120	60	Frost Silicone Coated	C, C-9			8 3/8			3500			
						Industrial Service									
14300-8		200/35/TF	120	60	Frost Silicone Coated	C, C-9			8 3/8	3500		2570			
						Industrial Service									
	Mog.		22751-2	X	200PS30/12	130	60	Clear	C, C-9	6 3/8	8 3/8	750		3650	
											2140		2785		
			14296-7		200PS30/12	120-130	60	Frost Silicone Coated	C, C-9		8 3/8	750		3250	
											2830		2470		
250	BR-40	Med.	38932-0	▲ (27, 87)	250BR40/I 4/1	120	4	Clear Reflector Infrared	C, C-9		6 1/2				
	PAR-38	Med. Skt.	37432-2	□ (53, 82)	K250PAR38/FL	120-130	12	PAR Floodlight (Krypton)	C, CC-6		5 3/8	4000	5000	3100	
			37433-0	□ (53, 82)	K250PAR38/SP	120-130	12	PAR Spotlight (Krypton)	C, CC-6		5 3/8	4000		3100	
R-40	Med.	38933-8	▲ \$ (27, 87, 89)	250R40/HR 4/1	120	4	Red Bowl Heat Ray	C, C-9		6 3/8	5000				

For the most current product information, go to the e-catalog on www.philips.com
Incandescent symbols and footnotes located on page 44

Watts	Bulb	Base	Product Number	Symbols, Footnotes	Ordering Code	Volts	Pkg. Qty.*	Description	Class, Filament	LCL (In.)	MOL (In.)	Rated Avg. Life, Hrs (93)	Approx. MBCP	Lumens		
300	BR-40	Med.	37441-3	▲ \$ (87) X	300BR/FL	120-130	24	Reflector Flood	C, CC-11		6 ½	2000		2480		
			14343-8	▲ \$ (87)	300BR/FL	120-130	24	Reflector Flood	C, CC-11		6 ½	2000		2480		
	PAR-56	M-P	23382-5		300PAR56/MFL	120	8	PAR Med. Flood	C, CC-13		5	2000				
			23405-4	(9, 55)	300PAR56/MFL	130	8	PAR Med. Flood	C, CC-13		5	2000				
			23388-2	(9, 55)	300PAR56/WFL	120	8	PAR Wide Flood	C, CC-13		5	2000				
			23410-4	(9, 55)	300PAR56/WFL	130	8	PAR Wide Flood	C, CC-13		5	2000				
			23378-3	(9, 46, 55)	300PAR56/NSP	120	8	PAR Narrow Spotlight	C, CC-13		5	2000				
	PS-25	Med.	28177-4	▲	300M/IF	120-130	60	Frost Ratings @120V=282W	C, CC-8		6 ¼	750	1280		6230	
			38941-1	▲	300M/IF	120	6	Frost	C, CC-8		6 ¼	750			6300	
			37151-8	▲	300M	120	60	Clear	C, CC-8	5 ¼	6 ¼	750			6280	
			37153-4	▲	300M	130	60	Clear Ratings @120V=265W	C, CC-8	5 ¼	6 ¼	750	2120		4675	
			13391-8	▲	300M	120-130	12	Clear Ratings @120V=265W	C, CC-8	5 ¼	6 ¼	750	2120		4625	
			35008-2	▲	300M/99IF	120	60	Frost Extended Service	C, CC-8		6 ¼	2500			5060	
			35009-0	▲	300M/99IF	130	60	Frost Extended Service Ratings @120V=265W	C, CC-8		6 ¼	2500	7130		4044	
			35007-4	▲	300M/99	130	60	Clear Extended Service Ratings @120V=265W	C, CC-8	5 ¼	6 ¼	2500	7134		4044	
			PS-30	Med.	22783-5	▲ X	300M/PS30IF	120	60	Frost	C, C-9		8 ¼	750		6100
					14307-3	▲	300M/PS30IF	120-130	60	Frost Ratings @120V=265W	C, C-9		8 ¼	750	2120	
	14306-5	▲			300M/PS30	120-130	60	Clear Ratings @120V=265W	C, C-9		8 ¼	750	2120		4900	
	14294-3				300M/PS30/35	120-130	60	Frost Industrial Service Ratings @120V=265W	C, C-9		8 ¼	3500	9900		3800	
	PS-35	Mog.	14320-6		300/RSIF	120	24	Frost Rough Service	C, C-9		9 ¾	1000		5150		
			14309-9		300/99IF	120-130	24	Frost Extended Service Ratings @120V=265W	C, C-9		9 ¾	1000	2830		4500	
			22890-8	X	300/99	130	24	Clear Extended Service Ratings @120V=265W	C, C-9	7	9 ¾	2500	7134		5070	
			14321-4		300/99	120-130	24	Clear Extended Service Ratings @120V=265W	C, C-9		9 ¾	2500	7134		4600	
			13390-0	▲ X	300/IF	120-130	12	Frost Ratings @120V=265W	C, C-9		9 ¾	1000	2830		5700	
14316-4				300/IF	120-130	12	Frost Ratings @120V=265W	C, C-9		9 ¾	1000	2830		4500		
22862-7			▲ X	300	120	24	Clear	C, C-9	7	9 ¾	1000			5700		
22889-0			▲ X	300	130	24	Clear Ratings @120V=265W	C, C-9	7	9 ¾	1000	2830		4063		
14314-9				300	120-130	24	Clear Ratings @120V=265W	C, C-9	7	9 ¾	1000	2830		4600		
24759-3			▲ X	300	277	24	Clear	C, C-9	7	9 ¾	1000			4300		
14317-2				300	277	24	Clear	C, C-9	7	9 ¾	1000			4000		
R-40			Med.	14432-9	■ ★	300R/FL/I	12	24	Reflector Flood Frost Swimming Pool	C, C-2V		6 ¾	2000		3240	
	37442-1	■ ★ X		300R/FL/I	120-130	24	Reflector Flood Swimming Pool	C, CC-11		6 ¾	2000		2480			
	14429-5	■ ★		300R/FL/I	120-130	24	Reflector Flood Swimming Pool	C, CC-11		6 ¾	2000		2480			
	Mog.	14433-7	★	300R/3FL	120-130	24	Reflector Flood	CC-11		7 ¼	2000		2480			

For the most current product information, go to the e-catalog on www.philips.com
Incandescent symbols and footnotes located on page 44

Incandescent

Watts	Bulb	Base	Product Number	Symbols, Footnotes	Ordering Code	Volts	Pkg. Qty.*	Description	Class, Filament	LCL (In.)	MOL (In.)	Rated Avg. Life, Hrs (93)	Approx. MBCP*	Lumens
350	PAR-56	M.P.	22904-7		350PAR56/SP	75	8	Train Light	C, CC-8		4 ½	500	185,000	6200
375	BR-40	Med. Skt.	14342-0	(19, 31, 37, 38)	375BR40	120	24	Reflector Infrared Lt. Frost Industrial	C, C-7A		7 ¾	5000		
	R-40	Med. Skt.	14574-8	(11, 31, 37, 89)	375R40/I	120	24	Clear Reflector Infrared Industrial	C, C-7A		7 ¾	5000		
400	G-30	Med.	37443-9	■ X (12, 22)	400G/FL	120-130	60	Clear Floodlight	C, C-7A	3	5 ½	800		6280
			14461-8	(12, 22)	400G/FL	120-130	60	Clear Floodlight	C, C-7A	3	5 ½	800		6280
	R-40	Med.	31069-8	■ X	400R40/FL	120	24	Swimming Pool	C, C-7A	3 ¾	6 ¾	2000		
			14431-1	■ ★ (31, 37, 51, 53)	400R40/FL	120	24	Swimming Pool	C, C-7A	3 ¾	6 ¾	2000		3500
500	PAR-64	Ext. Mog. End Prong	23417-9	(9, 55)	500PAR64/MFL	120	6	PAR Med. Flood	C, CC-13		6	2000		
			23416-1		500PAR64/NSP	120	8	PAR Narrow Spot	C, CC-13		6	2000		
	PS-35	Mog.	37446-2	X (9,46,55)	500	120-130	24	Clear	C, C-9	7	9 ¾	1000		
			14407-1		500	120-130	24	Clear Ratings @120V=442W	C, C-9	7	9 ¾	1000		8900
												2830		6755
			14313-1		500/IF	120-130	24	Frost Ratings @120V=442W	C, C-9		9 ¾	1000		8700
												2830		6600
			37448-8	X	500/99	120-130	24	Clear Extended Service	C, C-9	7	9 ¾	2500		8750
			14319-8		500/99	120-130	24	Clear Extended Service Ratings @120V=442W	C, C-9	7	9 ¾	2500		8100
												7134		6145
			14318-0		500/99IF	120-130	24	Frost Extended Service Ratings @120V=442W	C, C-9		9 ¾	2500		8000
												7134		6080
	PS-40	Mog.	14327-1		500	277	24	Clear	C, C-9		9 ¾	1000		7000
			14322-2		500PS40	120-130	24	Clear Ratings @120V=442W	C, C-9		9 ¾	1000		8300
												2830		6300
			23975-6	X (14, 31)	500/SBIF	120	24	Frost Silvered Bowl	C, C-9		9 ¾	1000		9500
			14325-5		500/SBIF	120-130	24	Frost Silvered Bowl Ratings @120V=442W	C, C-9		9 ¾	1000		8300
												2830		6300
			14326-3		500/RS	120-130	24	Clear Rough Service Ratings @120V=442W	C, C-9		9 ¾	1000		8300
												2830		6300
	R-40	Med.	33730-3	■ ★ X (31, 37, 51, 53, 12)	500R/3FL/2S	130	24	Swimming Pool Ratings @120V=442W	C, C-7A		6 ¾	2000		6120
												5707		4669
			14430-3	■ ★ X (31, 37, 51, 53, 12)	500R/3FL/2S	130	24	Swimming Pool Ratings @120V=442W	C, C-7A		6 ¾	2000		6120
												5707		4669
		Mog.	14434-5	★ (51, 53)	500R/3FL	120-130	24	Frost Reflector Flood	CC-11		7 ¼	2000		5000
			24783-3	★ X (51, 53)	500R/3FL	250	24	Frost Reflector Flood Special Service	C, C-7A		7 ¼	2000		
			14435-2	★ (51, 53)	500R/3FL	250	24	Frost Reflector Flood Special Service	C, C-7A		7 ¼	2000		4700
620	PS-40	Mog. Pf.	14323-0		620PS40P	120	24	Code Beacon	C, C-7A	5 1/8	10 1/8	3000		9000

For the most current product information, go to the e-catalog on www.philips.com
Incandescent symbols and footnotes located on page 44

Watts	Bulb	Base	Product Number	Symbols, Footnotes	Ordering Code	Volts	Pkg. Qty.*	Description	Class, Filament	LCL (In.)	MOL (In.)	Rated Avg. Life, Hrs (93)	Approx. MBCP	Lumens
Philinea Lamps														
60	T-10	2XS14s	34589-2		60T10/White	120-130	25	White Philinea	B, C-8		19 1/8	1500		400

Lamps Listed by Lumens

1950L	P-25	Med.	+ 20494-1	X	1950L/P25/TS	120	60	Traffic Signal	C, C-9	3	4 3/4	8000		1950
			+ 14572 2		1950L/P25/TS	120	60	Traffic Signal	C, C-9	3	4 3/4	8000		1950
			+ 26482-0	X	1950L/P25/TS	130	60	Traffic Signal	C, C-9	3	4 3/4	8000		1950
			+ 14573 0		1950L/P25/TS	130	60	Traffic Signal	C, C-9	3	4 3/4	8000		1950

Special Lighting

Night Light Plug In			25139-7	(94)	BCPNL 4C7 12/1	120	12	Night Light Plug In	B, C-7A		2 1/2	3000		16
---------------------	--	--	---------	------	----------------	-----	----	---------------------	---------	--	-------	------	--	----

Street Lighting Lamps, Multiple

189	PS-25	Med.	39423-9		189PS25/64	125	60	Clear	C, C-9	5 1/4	6 15/16	3000		2900
-----	-------	------	---------	--	------------	-----	----	-------	--------	-------	---------	------	--	------

Street Lighting Lamps, Series

Rated Init. (67) Lumens	Amps	Bulb	Base	Product Number	Symbols, Footnotes	Volts	Qty.	Description	Class, Filament	LCL (In.)	MOL (In.)	Rated Avg. Life Hrs. (93)
—	6.6A	PS-35	Mog.	25065-4	X	22.8	24	Clear	C, C-2V	7	9 3/8	3000
2200				14311-5		22.8	24	Clear Extended Service	C, C-2V	7	9 3/8	3000
—				36785-4	X	22.8	24	Clear Extended Service	C, C-2V	7	9 3/8	6000
2200				14312-3		22.8	24	Clear Extended Service	C, C-2V	7	9 3/8	6000
—		PS-35	Mog.	25069-6	X	34.0	24	Clear Extended Service	C, C-2V	7	9 3/8	3000
3800	14310-7				34.0	24	Clear Extended Service	C, C-2V	7	9 3/8	3000	
—		PS-40	Mog.	20540-1	X	52.7	24	Clear Extended Service	C, C-2V	7	9 3/4	6000
5400	14324-8				52.7	24	Clear Extended Service	C, C-2V	7	9 3/8	6000	

+ Pursuant to California law, these incandescent lamps **cannot** be used or offered for sale for use in traffic signals in the State of California.

For the most current product information, go to the e-catalog on www.philips.com

Incandescent symbols and footnotes located on page 44

Incandescent

Watts	Bulb	Base	Product Number	Symbols, Footnotes	Ordering Code	Volts	Pkg. Qty.*	Description	Class, Filament	LCL (In.)	MOL (In.)	Rated Avg. Life, Hrs (93)	Approx. MBCP*	Lumens
Decoratives, Blister-Carded														
3	CA-10	Med.	16697-4	▲ (12)	BC3CA10/CL/LL 6/1	120	6	Clear Long Life Flicker Flame	B, CC-2V		3 3/8	2000		
		Cand.	16698-2	▲ (12)	BC3CA10C/CL/LL 6/1	120	6	Clear Long Life Flicker Flame	B, CC-2V		4 1/8	2000		
15	BA-9	Cand.	16696-6	▲ (12)	BC15BA9C/CL/LL 6/4	120	24	Clear Long Life Bent Tip	B, CC-2V C-7A		3 3/8	2000		110
			16811-2	▲ (12)	BC15BA9C/CL/LL 6/2	120	12	Clear Long Life Bent Tip	B, CC-2V C-7A		4 3/8	2000		110
	F-10	Cand.	16830-2	▲ (12)	BC15F10C/CL/LL 6/2	120	12	Clear Long Life Flame	B, C-7A		3 3/8	2000		95
			16831-0	▲ (12)	BC15F10C/A/LL 6/2	120	12	Amber Long Life Flame	B, C-7A		3 3/8	2000		85
25	BA-9	Cand.	16719-7	▲ (12)	BC25BA9C/CL/LL 6/4	120	24	Clear Long Life Bent Tip	C, CC-2V C-7A		4 3/8	2000		150
			16806-2	▲ (12)	BC25BA9C/CL/LL 6/2	120	12	Clear Long Life Bent Tip	C, CC-2V C-7A		4 3/8	2000		150
			16810-4	▲ (12)	BC25BA9C/F/LL 6/2	120	12	Frost Long Life Bent Tip	C, CC-2V C-7A		4 3/8	2000		145
	BA-9 1/2	Med.	16819-5	▲ (12)	BC25BA9-1/2/CL/LL 6/2	120	12	Clear Long Life Bent Tip	C, CC-2V C-7A		4 3/8	2000		150
	B-10 1/2	Cand.	16824-5	▲ (12)	BC25B10-1/2C/CL/LL 6/2	120	12	Clear Long Life Blunt Tip	C, C-7A		4 3/8	2000		150
	B-13	Med.	16827-8	▲ (12)	BC25B13/CL/LL 6/2	120	12	Clear Long Life Blunt Tip	C, C-7A		4 3/8	2000		150
	CA-8	Cand.	13568-1	▲ (12)	BC25CA8C/CL/LL 6/2	120	12	Clear Petite Long Life Bent Tip	C, CC-2V		3 1/2	2000		220
	F-10	Cand.	16832-8	▲ (12)	BC25F10C/CL/LL 6/2	120	12	Clear Long Life Flame	B, C-7A		3 3/8	2000		105
	F-15	Med.	16833-6	▲ (12)	BC25F15/CL/LL 6/2	120	12	Clear Long Life Flame	B, C-9		4 1/2	2000		150
			16839-3	▲ (12)	BC25F15/IR/LL 6/2	120	12	Incandescent Long Life Flame	C, C-9		4 1/2	2000		150
			16840-1	▲ (12)	BC25F15/W/LL 6/2	120	12	White Long Life Flame	C, C-9		4 1/2	2000		120
			16841-9	▲ (12)	BC25F15/A/LL 6/2	120	12	Amber Long Life Flame	B, C-9		4 1/2	2000		130
	G-16 1/2	Cand.	16845-0	▲ (12)	BC25G16-1/2C/CL/LL 6/2	120	12	Clear Long Life Globe	B, CC-2V C-7A		3	2000		200
			16847-6	▲ (12)	BC25G16-1/2C/W/LL 6/2	120	12	White Long Life Globe	B, CC-2V C-7A		3	2000		165
Med.		13535-0	▲ (12)	BC25G16-1/2/CL/LL 6/2	120	12	Clear Long Life Globe	C, CC-2V		2 3/4	2000		180	
		13534-3	▲ (12)	BC25G16-1/2/W/LL 6/2	120	12	White Long Life Globe	C, CC-2V		2 3/4	2000		120	

For the most current product information, go to the e-catalog on www.philips.com
Incandescent symbols and footnotes located on page 44

Watts	Bulb	Base	Product Number	Symbols, Footnotes	Ordering Code	Volts	Pkg. Qty.*	Description	Class, Filament	LCL (In.)	MOL (In.)	Rated Avg. Life, Hrs (93)	Approx. MBCP*	Lumens	
40	BA-9	Cand.	16720-5	▲ (12)	BC40BA9C/CL/LL 6/4	120	24	Clear Long Life Bent Tip	C, CC-2V C-7A		4 3/16	2000		300	
			16807-0	▲ (12)	BC40BA9C/CL/LL 6/2	120	12	Clear Long Life Bent Tip	C, CC-2V C-7A		4 3/16	2000		300	
			16809-6	▲ (12)	BC40BA9C/F/LL 6/2	120	12	Frost Long Life Bent Tip	C, CC-2V C-7A		4 3/16	2000		295	
	BA-9 1/2	Med.	16760-1	▲ (12)	BC40BA9-1/2/CL/LL 6/4	120	24	Clear Long Life Bent Tip	C, CC-2V C-7A		4 1/8	2000		300	
			16820-3	▲ (12)	BC40BA9-1/2/CL/LL 6/2	120	12	Clear Long Life Bent Tip	C, CC-2V C-7A		4 1/8	2000		300	
			16821-1	▲ (12)	BC40BA9-1/2/F/LL 6/2	120	12	Frost Long Life Bent Tip	C, CC-2V C-7A		4 1/8	2000		295	
	B-10 1/2	Cand.	16825-2	▲ (12)	BC40B10-1/2C/CL/LL 6/2	120	12	Clear Long Life Blunt Tip	C, C-7A		4 1/8	2000		300	
			14125-9	▲ (12)	BC40B10-1/2C/NTL 6/2	120	12	Natural Light Blunt Tip	C, C-7A		4 1/8	2000		270	
	B-13	Med.	16828-6	▲ (12)	BC40B13/CL/LL 6/2	120	12	Clear Long Life Blunt Tip	C, C-7A		4 1/8	2000		300	
			14127-5	▲ (12)	BC40B13/NTL 6/2	120	12	Natural Light Blunt Tip	C, C-7A		4 1/8	2000		270	
	F-15	Med.	16835-1	▲ (12)	BC40F15/CL/LL 6/2	120	12	Clear Long Life Flame	C, C-9		4 1/2	2000		385	
			16837-7	▲ (12)	BC40F15/IR/LL 6/2	120	12	Indescent Long Life Flame	C, C-9		4 1/2	2000		370	
			16838-5	▲ (12)	BC40F15/W/LL 6/2	120	12	White Long Life Flame	C, C-9		4 1/2	2000		300	
	G-16 1/2	Cand.	16846-8	▲ (12)	BC40G16-1/2C/CL/LL 6/2	120	12	Clear Long Life Globe	C, CC-2V C-7A			3	2000		300
			16848-4	▲ (12)	BC40G16-1/2C/W/LL 6/2	120	12	White Long Life Globe	C, CC-2V C-7A			3	2000		245
			14129-1	▲ (12)	BC40G16-1/2C/NTL 6/2	120	12	Natural Light Globe	C, C-7A			3	2000		270
		Med.	13537-6	▲ (12)	BC40G16-1/2/CL/LL 6/2	120	12	Clear Long Life Globe	C, CC-2V			2 3/4	2000		300
			13536-8	▲ (12)	BC40G16-1/2/W/LL 6/2	120	12	White Long Life Globe	C, CC-2V			2 3/4	2000		270
60	BA-9	Cand.	16808-8	▲ (12)	BC60BA9C/CL/LL 6/2	120	12	Clear Long Life Bent Tip	C, CC-2V C-7A		4 3/8	2000		550	
			16721-3	▲ (12)	BC60BA9C/CL/LL 6/4	120	24	Clear Long Life Bent Tip	C, CC-2V C-7A		4 3/8	2000		550	
			16805-4	▲ (12)	BC60BA9C/F/LL 6/2	120	12	Frost Long Life Bent Tip	C, CC-2V C-7A		4 3/8	2000		545	
	BA-9 1/2	Med.	16822-9	▲ (12)	BC60BA9-1/2/CL/LL 6/2	120	12	Clear Long Life Bent Tip	C, CC-2V C-7A		4 1/8	2000		550	
			16823-7	▲ (12)	BC60BA9-1/2/F/LL 6/2	120	12	Frost Long Life Bent Tip	C, CC-2V C-7A		4 1/8	2000		545	
	B-10 1/2	Cand.	16826-0	▲ (12)	BC60B10-1/2C/CL/LL 6/2	120	12	Clear Long Life Blunt Tip	C, C-7A		4 1/8	2000		550	
			14126-7	▲ (12)	BC60B10-1/2C/NTL 6/2	120	12	Natural Light Blunt Tip	C, C-7A		4 1/8	2000		510	
	B-13	Med.	16829-4	▲ (12)	BC60B13/CL/LL 6/2	120	12	Clear Long Life Blunt Tip	C, C-7A		4 1/8	2000		550	
			14128-3	▲ (12)	BC60B13/NTL 6/2	120	12	Natural Light Blunt Tip	C, C-7A		4 1/8	2000		510	
	F-15	Med.	16842-7	▲ (12)	BC60F15/CL/LL 6/2	120	12	Clear Long Life Flame	C, C-9		4 1/2	2000		630	
	G-16 1/2	Cand.	16699-0	▲ (12)	BC60G16-1/2C/CL/LL 6/2	120	12	Clear Long Life Globe	C, CC-2V C-7A			3	2000		540
			16700-7	▲ (12)	BC60G16-1/2C/W/LL 6/2	120	12	White Long Life Globe	C, CC-2V C-7A			3	2000		450
14130-9			▲ (12)	BC60G16-1/2C/NTL 6/2	120	12	Natural Light Globe	C, C-7A			3	2000		510	
Med.		13538-4	▲ (12)	BC60G16-1/2/CL/LL 6/2	120	12	Clear Long Life Globe	C, CC-2V			2 3/4	2000		540	
		13530-1	▲ (12)	BC60G16-1/2/W/LL 6/2	120	12	White Long Life Globe	C, CC-2V			2 3/4	2000		420	
100	F-20	Med.	16844-3	▲ (12)	100F20/POSTLT/CL/LL 6/1	120	6	Clear Long Life PostLight	C, C-9		5 1/2	4000		1250	

For the most current product information, go to the e-catalog on www.philips.com
Incandescent symbols and footnotes located on page 44

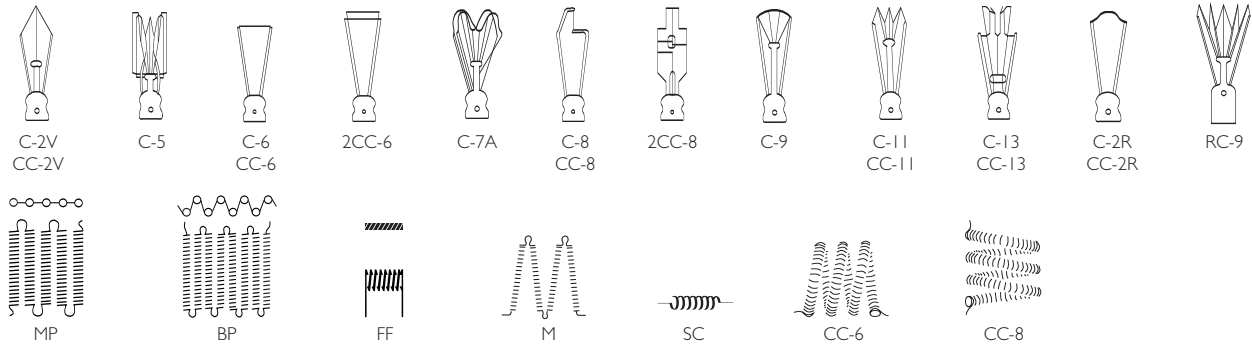
Incandescent

Watts	Bulb	Base	Product Number	Symbols, Footnotes	Ordering Code	Volts	Pkg. Qty.*	Description	Class, Filament	MOL (In.)	Rated Avg. Life, Hrs (93)	Approx. MBCP*	Lumens			
Decoratives, Boxed																
15	BA-9	Cand.	31087-0	▲ (12)	15BA9C/4M	120	25	Clear Bent Tip	B, C-7A	3 3/4	4000		90			
	G-16 1/2	Cand.	31132-4	▲ (12)	15G16-1/2C/4M	120	25	Clear Globe	B, C-7A	3	4000		80			
25	B-10 1/2	Cand.	31114-2	▲ (12)	25B10-1/2C/4M	120	25	Clear Blunt Tip	C, C-7A	4 1/6	4000		135			
	G-16 1/2	Cand.	31133-2	▲ (12)	25G16-1/2C/4M	120	25	Clear Globe	C, C-7A	3	4000		170			
40	BA-9	Cand.	31093-8	▲ (12)	40BA9C/4M	120	25	Clear Bent Tip	C, C-7A	4 3/6	4000		270			
	BA-9 1/2	Med.	31098-7	▲ (12)	40BA9-1/2/4M	120	25	Clear Bent Tip	C, C-7A	4 1/6	4000		270			
	B-10 1/2	Cand.	31115-9	▲ (12)	40B10-1/2C/4M	120	25	Clear Blunt Tip	C, C-7A	4 1/6	4000		270			
	G-16 1/2	Cand.	31134-0	▲ (12)	40G16-1/2C/4M	120	25	Clear Globe	C, C-7A	3	4000		250			
60	BA-9	Cand.	31095-3	▲ (12)	60BA9C/4M	120	25	Clear Bent Tip	C, C-7A	4 3/6	4000		530			
	BA-9 1/2	Med.	31099-5	▲ (12)	60BA9-1/2/4M	120	25	Clear Bent Tip	C, C-7A	4 1/6	4000		530			
	B-10 1/2	Cand.	31116-7	▲ (12)	60B10-1/2C/4M	120	25	Clear Blunt Tip	C, C-7A	4 1/6	4000		530			
Decoratives, All Others																
25	G-25	Med.	16887-2	▲	25G25/CL/LL 12/1	120	12	Clear Long Life Globe	C, CC-6	4 7/6	2000		235			
			16748-6	▲	25G25/W/LL 12/1	120	12	White Long Life Globe	C, CC-6	4 7/6	2000		210			
			16901-1	▲	25G25/CL/LL 4/3	120	12	Clear Long Life Globe	C, CC-6	4 7/6	2000		235			
			16902-9	▲	25G25/W/LL 4/3	120	12	White Long Life Globe	C, CC-6	4 7/6	2000		210			
	G-40	Med.	13809 9		25G40/4M 6/1	120	6	Clear Long Life Globe	C, CC-6	4 7/6	2000					
40	G-25	Med.	16702-3	▲	40G25/CT	120	6	Clear Chrome-Top Long Life Globe	C, C-9	4 7/6	2000		200			
			16747-8	▲	40G25/CL/LL 12/1	120	12	Clear Long Life Globe	C, CC-6	4 7/6	2000		460			
			16746-0	▲	40G25/W/LL 12/1	120	12	White Long Life Globe	C, CC-6	4 7/6	2000		415			
			16903-7	▲	40G25/CL/LL 4/3	120	12	Clear Long Life Globe	C, CC-6	4 7/6	2000		460			
			16904-5	▲	40G25/W/LL 4/3	120	12	White Long Life Globe	C, CC-6	4 7/6	2000		415			
			13563-3	▲	40G25/NTL 6/1	120	12	Natural Light Globe	C, CC-6	4 7/6	1500		320			
				G-40	Med.	16857-5	▲	40G40/CL/LL 6/1	120	6	Clear Long Life Globe	C, C-9	6 15/6	3000		372
			16858-3	▲	40G40/W/LL 6/1	120	6	White Long Life Globe	C, C-9	6 15/6	3000		335			
60	G-25	Med.	16896-2	▲	60G25/CL/LL 12/1	120	12	Clear Long Life Globe	C, CC-6	4 7/6	2000		775			
			16749-4	▲	60G25/W/LL 12/1	120	12	White Long Life Globe	C, CC-6	4 7/6	2000		700			
			16899-6	▲	60G25/CL/LL 4/3	120	12	Clear Long Life Globe	C, CC-6	4 7/6	2000		775			
			16900-3	▲	60G25/W/LL 4/3	120	12	White Long Life Globe	C, CC-6	4 7/6	2000		700			
			13562-4	▲	60G25/NTL 6/1	120	12	Natural Light Globe	C, CC-6	4 7/6	1500		560			
				G-30	Med.	16849-2	▲	60G30/W/LL 6/1	120	6	White Long Life Globe	C, C-9	5 1/2	3000		580
				G-40	Med.	16851-8	▲	60G40/W/LL 6/1	120	6	White Long Life Globe	C, C-9	6 15/6	3000		595
			16852-6	▲	60G40/CL/LL 6/1	120	6	Clear Long Life Globe	C, C-9	6 15/6	3000		665			
100	G-25	Med.	13423-9	▲	100G25/W/LL 12/1	120	12	White Long Life Globe	C, CC-6	4 7/6	2000		1180			
			16850-0	▲	100G30/W/LL 6/1	120	6	White Long Life Globe	C, C-9	5 1/2	3000		945			
			16853-4	▲	100G40/W/LL 6/1	120	6	White Long Life Globe	C, C-9	6 15/6	3000		985			
			16859-1	▲	100G40/CL/LL 6/1	120	6	Clear Long Life Globe	C, C-9	6 15/6	3000		1100			
150	G-40	Med.	16854-2	▲	150G40/W/LL 6/1	120	6	White Long Life Globe	C, C-9	6 15/6	3000		1770			

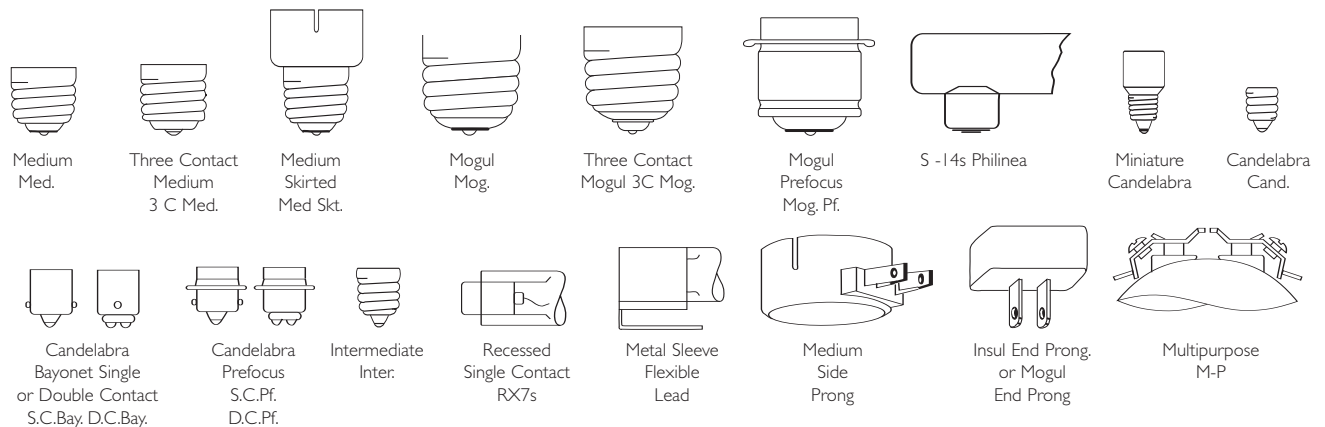
For the most current product information, go to the e-catalog on www.philips.com
Incandescent symbols and footnotes located on page 44

Filament Designations (Not Actual Sizes)

Filament designations consist of a letter or letters to indicate how the wire is coiled and an arbitrary number sometimes followed by a letter to indicate the arrangement of the filament on the supports. Prefix letters include C (coil) — wire is wound into a helical coil or it may be deeply fluted; CC (coiled coil) — wire is wound into a helical coil and this coiled wire again wound into a helical coil. Some of the more commonly used types of filament arrangements are illustrated.

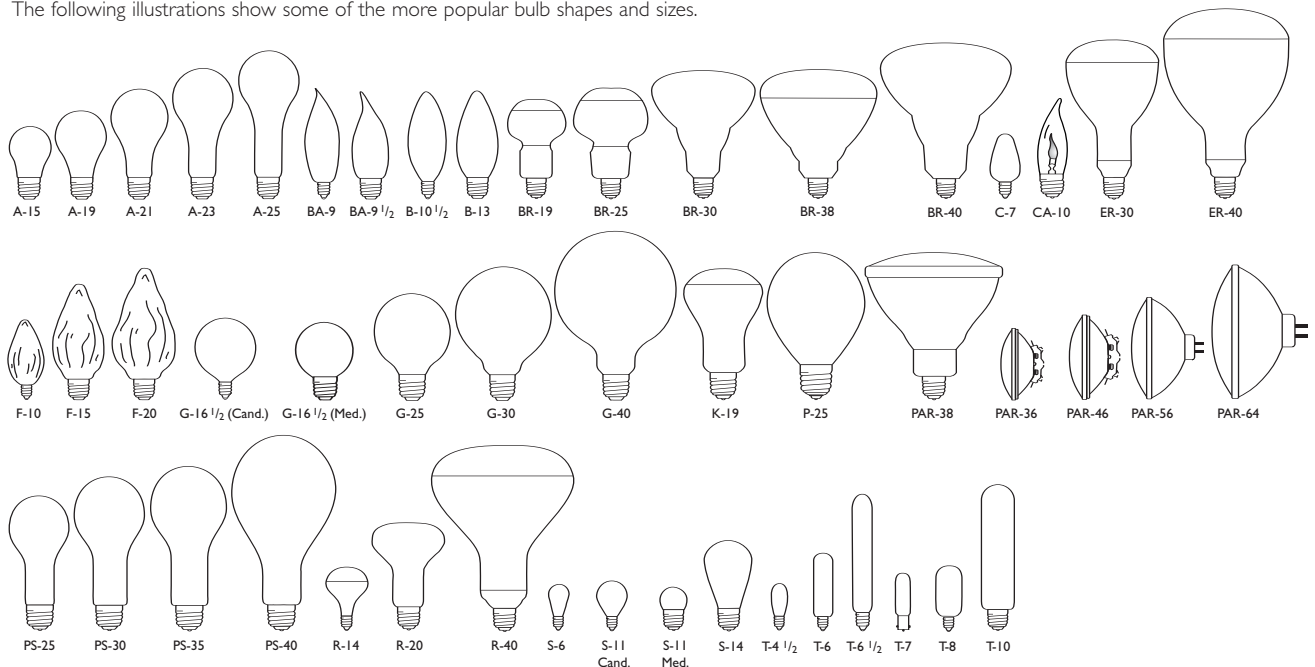


Base Shapes (Not Actual Sizes)



Bulb Shapes (Not Actual Sizes)

The size and shape of a bulb is designated by a letter or letters followed by a number. The letter indicates the shape of the bulb while the number indicates the diameter of the bulb in eighths of an inch. For example, "T-10" indicates a tubular shaped bulb having a diameter of $\frac{10}{8}$ or $1\frac{1}{4}$ inches. The following illustrations show some of the more popular bulb shapes and sizes.



- Exclusive to Philips Lighting Company
 - Quantity shown is minimum shipping container — refer to Net Price Schedule for number of lamps to qualify as a standard case.
 - * Two Lamp Carded Pack.
 - ▲ Aluminum base.
 - Nickel plated brass base.
 - ★ Heat resisting glass bulb.
 - Consider the compact fluorescent lamps listed on pages 53–54 for energy savings
 - \$ Energy Saving Product
 - Maximum Beam Candlepower
 - X Orders will be shipped until inventory is depleted; no longer manufactured
 - (E) This Bulb Meets US Federal Minimum Efficiency Standard
- (2) Although the lamp is of the highest quality in material and workmanship, it has been designed to meet certain purchase requirements which preclude a guarantee of performance.
 - (3) Indefinite-long life.
 - (4) Average laboratory life is 200 hours for vacuum cleaner and 600 hours for sewing machine service. Design life: 1000 hours.
 - (8) Operate base down.
 - (9) This lamp should be shielded from moisture to prevent breakage.
 - (10) Operating position—horizontal.
 - (11) Design volts 115.
 - (12) Operate base down to horizontal.
 - (13) Not recommended for horizontal burning.
 - (14) Operate base up.
 - (15) Operate base down. Filaments operated separately.
 - (18) Base is medium left hand thread.
 - (19) May not give satisfactory performance if any accessory equipment is attached to or touches the glass bulb.
 - (22) Unsatisfactory lamp operation is likely to occur in operating positions between horizontal and base up, particularly between 45° from base up and base up.
 - (23) May be operated in any position.
 - (25) Base pins approximately parallel to plane of filament.
 - (26) Use only on circuits supplying the voltage as marked on the lamp. DO NOT use in household sockets.
 - (27) Average laboratory life in excess of 5000 hours. In-service life depends upon service conditions.
 - (29) Suitable for indoor and outdoor service.
 - (31) Operate only in porcelain sockets.
 - (34) Operate base up to horizontal.
 - (37) Should not be used in equipment where the base temperature will exceed 500°F.
 - (41) Avoid use at short distances on materials that are inflammable or susceptible to heat damage.
 - (43) Unless otherwise noted, may be operated in any position, but lumen maintenance is best when operated vertically base up.
 - (46) Stippled, rounded cover.
 - (49) Should not be used in equipment where the seal temperature exceeds 750°F.
 - (50) For use on 50-60 cycle A.C. circuits.
 - (51) Light output is maintained best when operated within 45° of vertically base up.
 - (53) The bulb, though made of heat-resistant glass, may break if moisture falls on it. Not recommended for use in enclosed, close-fitting housings.
 - (55) For use only with heat resistant connector and with lamp supported by bulb rim.
 - (59) Life dependent upon service conditions.
 - (63) Design volts 145.
 - (64) For use only in equipment specially designed to maintain bulb and base temperature within safe limits.
 - (65) AA tolerance 1/32", L.C.L. tolerance 3/64".
 - (66) Silicone Coating reduces lumen output from Standard Values less than 3%.
 - (72) Light Center Length & Axial Alignment tolerance 1/64".
 - (75) 2 3/4" diameter unsilvered spot on end of bulb.
 - (81) LCL & Axial Alignment tolerance 1/32".

- (82) **CAUTION:** To avoid deterioration of lampholder by heat, use only heat resistant lampholders or fixtures listed by a nationally recognized electrical testing organization for use with reflector or PAR lamps.
- (83) Base does not have ceramic insulator.
- (86) **PAR Halogen Caution Notice:** Before using bulb, see operating instructions on inside flap. Adherence to the operating instructions will reduce the risk of personal injury or fire. The filament capsule contained inside this glass bulb is pressurized, operates at high temperature and could unexpectedly shatter. Should the outer bulb break, particles of extremely hot glass could be discharged into the fixture and/or the surrounding environment, thereby creating a risk of personal injury or fire.
- Operating Instructions:** Before replacing, turn off power and let lamp cool to avoid electrical shock or burn.
- For indoor or outdoor use. A weather-protected fixture is recommended for wet locations.
 - Suitable for use in open fixtures.
 - Do not exceed the maximum wattage rating of the fixture.
 - Do not use if outer glass is scratched or broken since it may break during operation or removal.
 - If outer glass breaks the lamp may continue to light, however, immediately discontinue use.
 - Due to the heat that radiates from the bulb, do not use in close proximity to combustible materials or objects susceptible to drying or fading.
 - Manage in accord with disposal laws.
- (87) Do not allow hot bulb to come in contact with liquid or metal parts of the fixture, as glass may shatter. Do not use outdoors. Do not operate in close proximity to flammable materials or those adversely affected by heat or drying. Operate only in heat resistant sockets.
- (89) **CAUTION:** Do not operate in close proximity to flammable materials or those adversely affected by heat or drying. Operate only in heat resistant sockets.
- WARNING:** Use carefully. May cause serious burns. Do not use over insensitive skin areas or in the presence of poor circulation. The unattended use of infrared heat by children or incapacitated persons may be dangerous.
- Lamp should not be placed closer than 18" to the surface being irradiated.
 - Do not use for therapeutic or topical applications unless recommended by a physician.
 - For food warming, use only lamps with heat resisting glass.
- (90) Since there is considerable heat radiation in the beam of this lamp, care should be taken against using it without suitable protection, in close proximity to combustible materials or those adversely affected by drying action.
- (91) **CAUTION:** Do not touch inner capsule with bare hands. Fingerprints may result in shorter life. Remove fingerprints with alcohol. **THIS LAMP IS PRESSURIZED AND COULD SHATTER** so to avoid injury and to avoid exposure to ultraviolet radiation, use only in fixtures that provide a protective shield of tempered glass. Provide adequate ventilation to ensure that seal temperature does not exceed 350°C and use only in fixtures rated for the wattage stated on this package. To avoid risks of burns or other injury, turn power off and allow lamp to fully cool before attempting to replace. Socket condition may affect lamp life. Inspect and replace socket if deterioration has occurred.
- (92) **CAUTION: THIS LAMP IS PRESSURIZED AND COULD SHATTER** so to avoid injury and to avoid exposure to ultraviolet radiation, this lamp should be used in a fixture that provides a protective shield of tempered glass. Provide adequate ventilation to ensure that seal temperature does not exceed 350°C and use only in fixtures rated for the wattage stated on this package. To avoid risks of burns or other injury, turn power off and allow lamp to fully cool before attempting to replace. Socket condition may affect lamp life. Inspect and replace socket if deterioration has occurred.
- (93) Rated average life is the length of operation (in hours) at which point an average of 50% of the lamps will still be operational and 50% will not.

- (94) To prevent electrical shock, match wide blade of plug to wide slot of outlet, fully insert. Do not cover night light; overheating may occur. Do not plug in near radiator or source of heat. **WARNING:** for indoor use only.
- (95) **NOTICE:** Do not touch bulb with bare hands. Fingerprints may result in shorter life. Remove fingerprints with alcohol. **CAUTION: THIS LAMP IS PRESSURIZED AND COULD SHATTER** so to avoid injury and to avoid exposure to ultraviolet radiation, use only in fixtures that provide a protective shield of tempered glass. Provide adequate ventilation to ensure that seal temperature does not exceed 350°C and use only in fixtures rated for the wattage stated on this package. To avoid risks of burns or other injury, turn power off and allow lamp to fully cool before attempting to replace. Socket condition may affect lamp life. Inspect and replace socket if deterioration has occurred.
- (96) **Operating Instructions:** Do not use lamp in close proximity to combustible materials. If used outdoors, use in an enclosed fixture only. If used indoors, no additional shield is required. Can be operated in all positions. **CAUTION:** Read operating instructions before use. If outer glass breaks, turn power off immediately and avoid touching any metal components. To avoid potential burn and electrical shock during lamp replacement, always turn power off and let lamp cool before replacing bulb. Lasts 2 years based on 4 hours average usage per day/7 days per week.
- (97) **Operating Instructions:** Before replacing, turn off power and let lamp cool to avoid electrical shock or burn. For indoor use only. Do not allow hot bulb to come in contact with liquid or metal parts of the fixture as glass may shatter. Do not exceed the maximum wattage rating of the fixture. Do not use if outer glass is scratched or broken since it may break during operation or removal. If outer glass breaks the lamp may continue to light, however, immediately discontinue use. Due to the heat that radiates from the bulb, do not use in close proximity to combustible materials or objects susceptible to drying or fading. Manage in accord with disposal laws.
- CAUTION:** Adherence to the operating instructions will reduce the risk of personal injury or fire. The filament capsule contained inside this glass bulb is pressurized, operates at high temperature and could unexpectedly shatter. Should the outer bulb break, particles of extremely hot glass could be discharged into the fixture and/or the surrounding environment, thereby creating a risk of personal injury or fire.
- (98) **Note:** This twistline has a GU10 base and may be used in fixtures that have either GU10 or GZ10 sockets.
- Operating Instructions:** Do not use in close proximity to combustible materials or objects adversely affected by drying or fading. Can be operated in all positions. **CAUTION: THIS LAMP IS PRESSURIZED AND COULD SHATTER** so to avoid injury and to avoid exposure to ultraviolet radiation, this lamp should be used in a fixture that provides a protective shield of tempered glass. If outer glass breaks, immediately discontinue use. Always turn power off and let lamp cool before removal to avoid potential burn or electric shock.
- (99) **WARNING: BULB OPERATES AT VERY HIGH TEMPERATURES AND MUST BE USED PROPERLY TO AVOID/REDUCE RISK OF FIRE.** Do not use bulbs greater than 300 watts in indoor residential fixtures. Use only in fixtures specifying this bulb type and that meet revised UL 153 standard for tungsten-halogen torchiere lamps. Bulb is pressurized and could shatter and should only be used in fixtures that provide a protective shield of tempered glass. To avoid exposure to ultraviolet radiation which could cause skin and eye irritation use only in fixtures that provide a protective shield of tempered glass. **NOTICE:** Do not touch bulb with bare hands. Fingerprints may result in reduced performance unless they are removed with alcohol. When operating, bulb is hot. To avoid risks of burns or injury, turn power off and allow bulb to cool before replacing. Socket conditions may affect bulb life. Inspect and replace socket if deterioration has occurred. Provide adequate ventilation to ensure that seal temperature does not exceed 350°C. **TO AVOID/REDUCE RISK OF FIRE, DO NOT USE NEAR COMBUSTIBLE MATERIALS.**