

# Specialty Lamps

## Tubular Quartz Infrared Bulb Shapes (Not Actual Sizes)

Tubular quartz infrared heat lamps are designed for service other than illumination. Unless otherwise noted,

1. Tubular quartz heat lamps should not be used in equipment where the seal temperatures exceed 350°F.
2. Operating position is HORIZONTAL.
3. RX7s Base = Recessed Single Contact

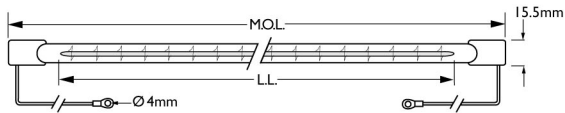


Fig. 1 (Y Base)  
Leads Are Approximately 6"



Fig. 2 (RX7s Base)

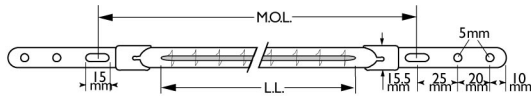


Fig. 3 (X Base)

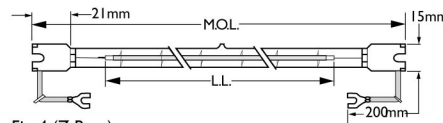


Fig. 4 (Z Base)

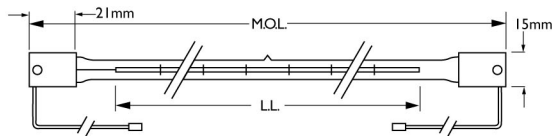


Fig. 5 (SKI5 Base)  
I3844Z/98—Lead is 15.7", I4103Z/98—Lead is 9"

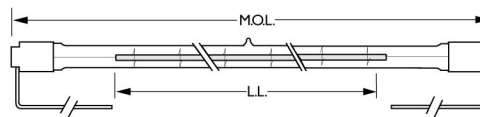


Fig. 6 (U Base)  
Leads Are Approximately 6"

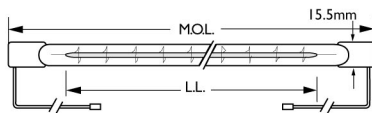


Fig. 7 (Y Base)  
I3169Y—Lead is 6.3". I3195Y—Lead is 7.8"

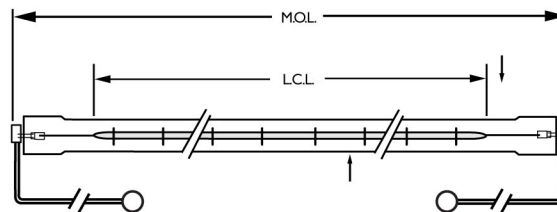


Figure 8 (V Base)  
I3136V, I3170V, I3138V, I4118V lead is 1.5"  
I3168V leads are 4.7" and 5.5"

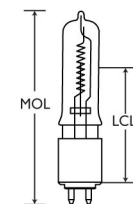


Fig. 9 (G9.5 Base)