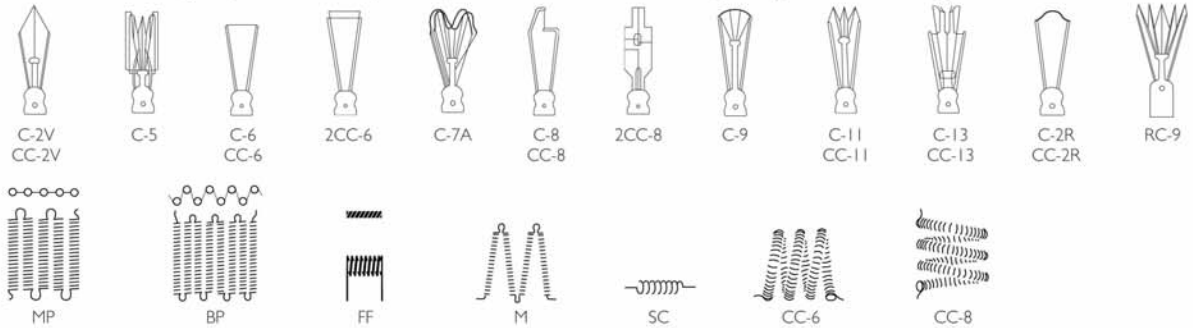
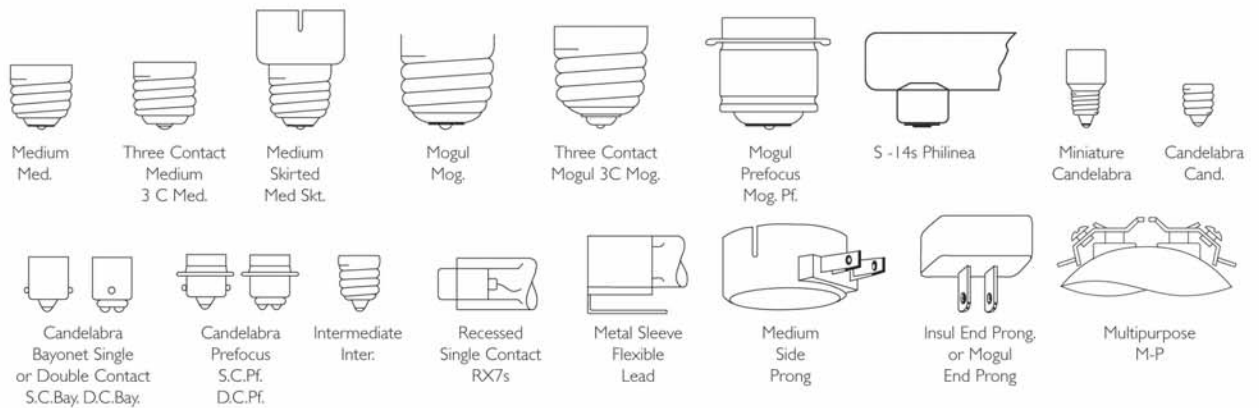


## Filament Designations (Not Actual Sizes)

Filament designations consist of a letter or letters to indicate how the wire is coiled and an arbitrary number sometimes followed by a letter to indicate the arrangement of the filament on the supports. Prefix letters include C (coil) — wire is wound into a helical coil or it may be deeply fluted; CC (coiled coil) — wire is wound into a helical coil and this coiled wire again wound into a helical coil. Incandescent lamps are classified as type B or C. B filament types operate in a vacuum and C filament types operate in an inert gas atmosphere. Some of the more commonly used types of filament arrangements are illustrated.



## Base Shapes (Not Actual Sizes)



## Bulb Shapes (Not Actual Sizes)

The size and shape of a bulb is designated by a letter or letters followed by a number. The letter indicates the shape of the bulb while the number indicates the diameter of the bulb in eighths of an inch. For example, "T-10" indicates a tubular shaped bulb having a diameter of  $\frac{1}{8}$  or  $\frac{1}{4}$  inches. The following illustrations show some of the more popular bulb shapes and sizes.

